

CONTENTS

ENGINE

CYLINDER HEAD.....	B2
CRANKSHAFT. PISTON.....	B3
AIR SHROUD. FAN.....	B4
OIL PUMP.....	B5
INTAKE.....	B6
CARBURETOR.....	B7
EXHAUST.....	B8
CRANKCASE.....	B9-B10
STARTER.....	B11
CLUTCH.....	B12-B13
TRANSMISSION.....	B14

CHASSIS

FRAME.....	B15
FENDER.....	C2
SIDE COVER.....	C3
OIL TANK.....	C4
REAR SUSPENSION.....	C5
FRONT FORK.....	C6
FUEL TANK.....	C7
SEAT. CARRIER.....	C8
FRONT WHEEL.....	C9-C10
REAR WHEEL.....	C11
STEERING HANDLE. CABLE.....	C12
STANT. FOOTREST.....	C13
LEG SHIELD.....	C14
COWLING.....	C15

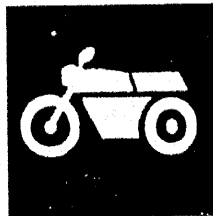
ELECTRICAL

GENERATOR.....	D2
METER.....	D3
HEADLIGHT.....	D4
TAILLIGHT.....	D5
HANDLE SWITCH. LEVER.....	D6
ELECTRICAL 1.....	D7
ELECTRICAL 2.....	D8

INDEX

NUMERICAL INDEX.....	M1 ~ M2
----------------------	---------

YAMAHA



**PARTS
CATALOGUE**

YA50R (4SN2) AXIS

264SN-341E1

FOREWORD

This Parts Catalogue is related to the parts for the model(s) in the below frame. When you are ordering replacement parts, please refer to this Parts Catalogue and quote both part numbers and part names correctly.

YA50R AXIS (4SN2)

1. Modifications or additions which have been after issue of the Parts Catalogue will be announced in the Yamaha Parts News. It is advisable that you make necessary corrections to the Parts Catalogue according to the Yamaha Parts News.

2. Abbreviations

The following abbreviations are used in this Parts Catalogue:

- "UR" Use specified parts number
- "UN" Use as many as needed
- "AP" Alternate Parts
- "LM" Local Made (Parts need to be ordered locally)
- "F#" Frame No. (Applicable machine No.)

3. Parts which are to be supplied in an assembly, are listed with a dot (•) in front of the part name as shown below.

EXAMPLE

CARBURETOR ASSY

- JET, pilot
- NOZZLE, main

4. Number of component for assembly.

The numeral appearing to the right of each component part indicates the quantity of parts for each assembly unit..

EXAMPLE

PART No.	DESCRIPTION	Q'TY	REMARKS
2F5-83310-60	FRONT FLASHER LIGHT, ASSY	2	
115-83311-60	• BUL.B, (6V-18W)	1	

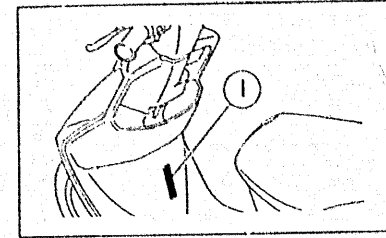
5. Applicable colors of graphics are represented in the "REMARKS" as shown below..

EXAMPLE

PART No.	DESCRIPTION	Q'TY	REMARKS
2N4-24110-00-X5	FUEL TANK COMP.	1	MAXIM RED
3J1-24240-10	• GRAFIC, FUEL TANK	1	for MXR

6. Applicable Serial No. and Color Code

(1) Frame Serial No.	4SN-000803
----------------------	------------



Color Code	Color Name	Abbreviation
004B	BLACK 2	BL2
000M	SWEET HEART RED	SHR

7. Note that the illustrations are for reference in finding parts numbers, not to be used ofr assembling. When assembling, please use the applicable service manual.

8. The asterisk (*) before a reference number indicates modification items after the first edition.

CONTENTS

ENGINE

CYLINDER HEAD.....	B2
CRANKSHAFT, PISTON.....	B3
AIR SHROUD, FAN.....	B4
OIL PUMP.....	B5
INTAKE.....	B6
CARBURETOR.....	B7
EXHAUST.....	B8
CRANKCASE.....	B9-B10
STARTER.....	B11
CLUTCH.....	B12-B13
TRANSMISSION.....	B14

CHASSIS

FRAME.....	B15
FENDER.....	C2
SIDE COVER.....	C3
OIL TANK.....	C4
REAR SUSPENSION.....	C5
FRONT FORK.....	C6
FUEL TANK.....	C7
SEAT, CARRIER.....	C8
FRONT WHEEL.....	C9-C10
REAR WHEEL.....	C11
STEERING HANDLE, CABLE.....	C12
STANT, FOOTREST.....	C13
LEG SHIELD.....	C14
COWLING.....	C15

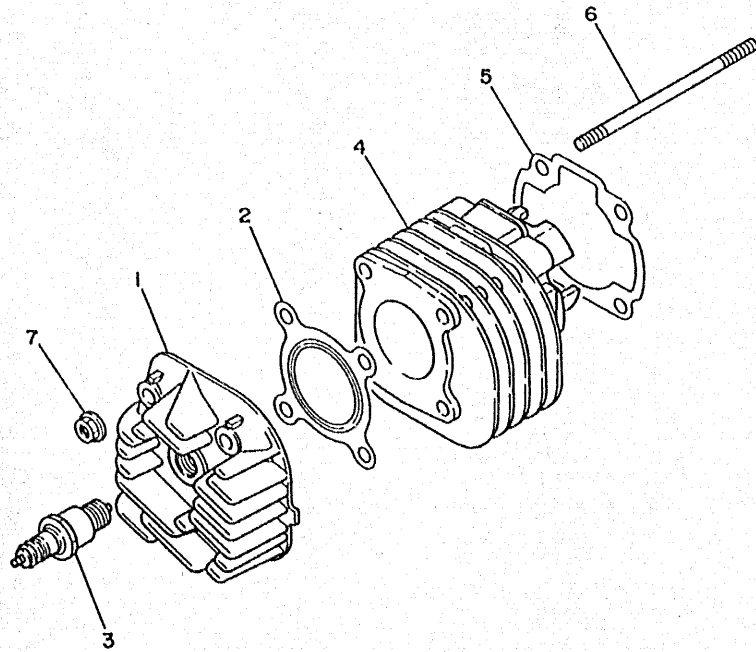
ELECTRICAL

GENERATOR.....	D2
METER.....	D3
HEADLIGHT.....	D4
TAILLIGHT.....	D5
HANDLE SWITCH, LEVER.....	D6
ELECTRICAL 1.....	D7
ELECTRICAL 2.....	D8

INDEX

NUMERICAL INDEX.....	M1 ~ M2
----------------------	---------

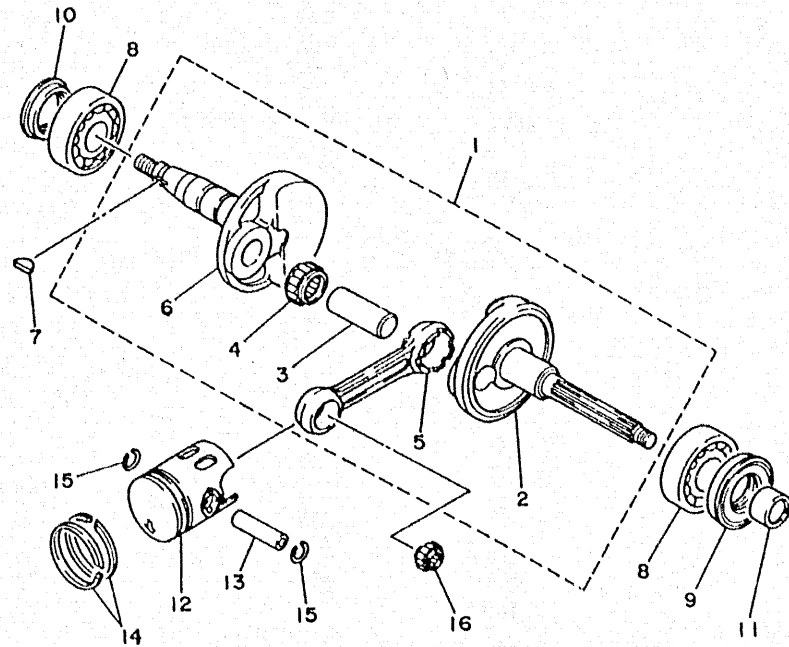
FIG. 1 - CYLINDER



REF. NO.	PART NO.	DESCRIPTION	Q'TY	REMARKS
1	4CU-E1111-00	HEAD, CYLINDER 1	1	
2	4FW-E1181-00	GASKET, CYLINDER HEAD 1	1	
3	94701-00110	PLUG, SPARK (NGK BR7HS)	1	
4	4FW-E1311-00	CYLINDER 1	1	
5	4CU-E1351-00	GASKET, CYLINDER	1	
6	90116-07353	BOLT, STUD	4	
7	90179-07381	NUT	4	

← FWD

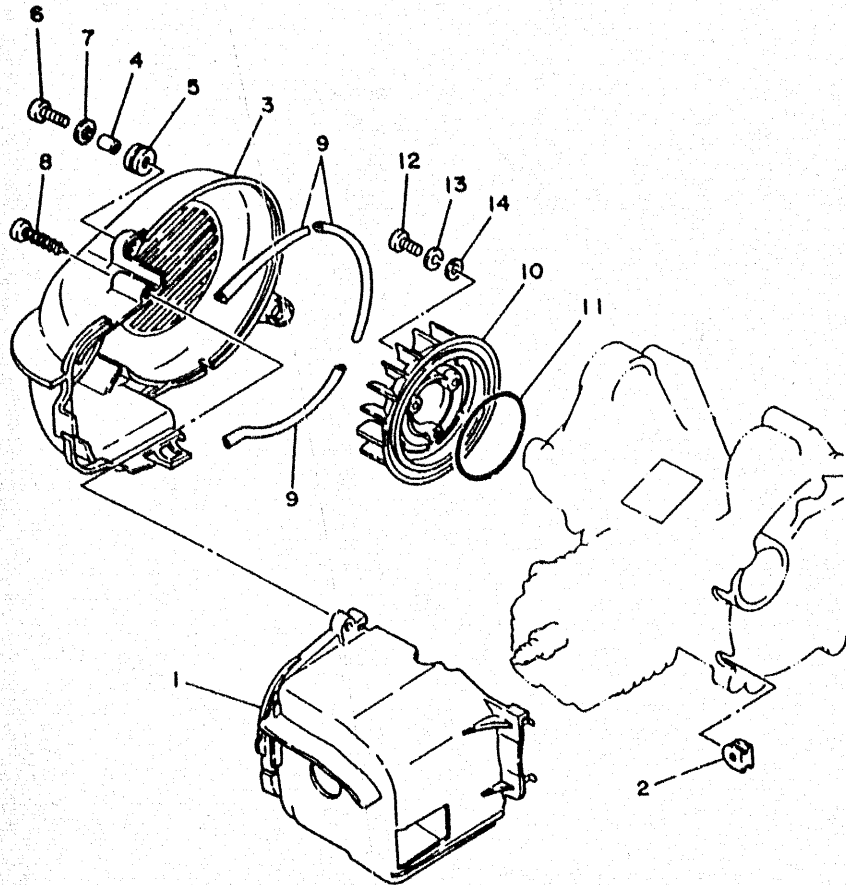
FIG. 2 - CRANKSHAFT. PISTON



REF. NO.	PART NO.	DESCRIPTION	Q'TY	REMARKS
1	4CU-E1400-00	CRANKSHAFT ASSY	1	
2	4CU-E1412-00	• CRANK 1	1	
3	1YU-11681-00	• PINK, CRANK 1	1	
4	3VL-E1415-00	• BEARING ASSY 1	1	
5	3VL-E1651-10	• ROD, CONNECTING	1	
6	4CU-E1422-00	• CRANK 2	1	
7	90280-03017	KEY, WOODRUFF	1	
8	93306-20458	BEARING	2	
9	93102-20425	OIL SEAL	1	
10	93101-20138	OIL SEAL	1	
11	90387-156U0	COLLAR	1	
12	3VL-E1631-00-96	PISTON (STD)	1	UR STD
	3VL-E1636-00	PISTON (0,50MM O/S)	1	AP
13	3VL-E1633-00	PIN, PISTON	1	
14	3VL-E1610-00	PISTON RING SET	1	UR STD
	3VL-E1610-20	PISTON RING SET (0,50MM O/S)	1	AP
15	93450-11120	CIRCLIP	2	
16	93310-210M0	BEARING, CYLINDRICAL	1	

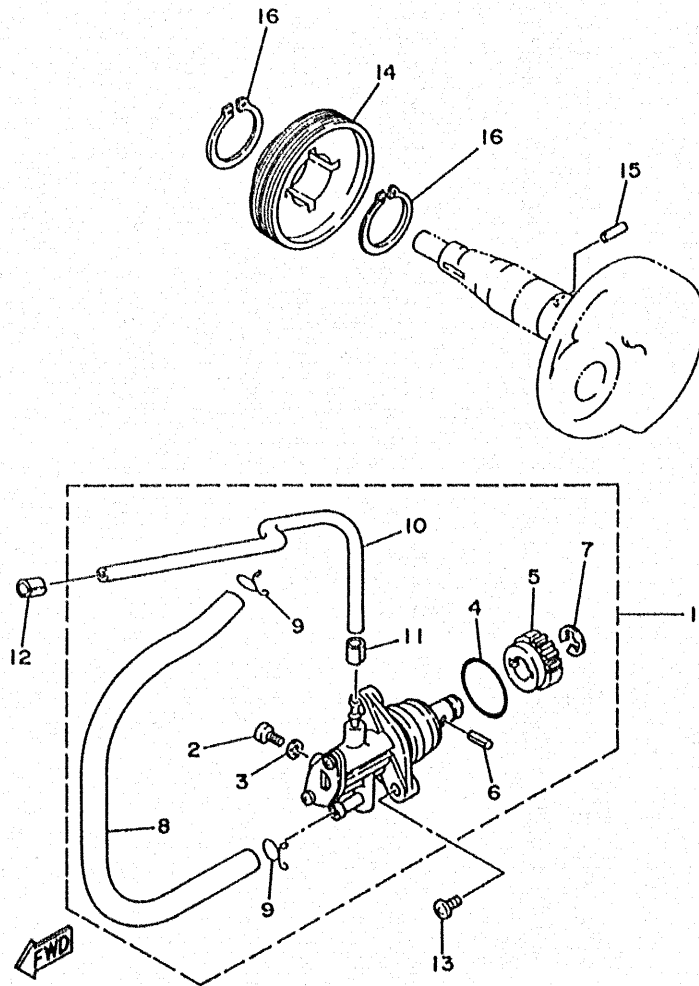
FWD

FIG. 3 - AIR SHROUD. FAN



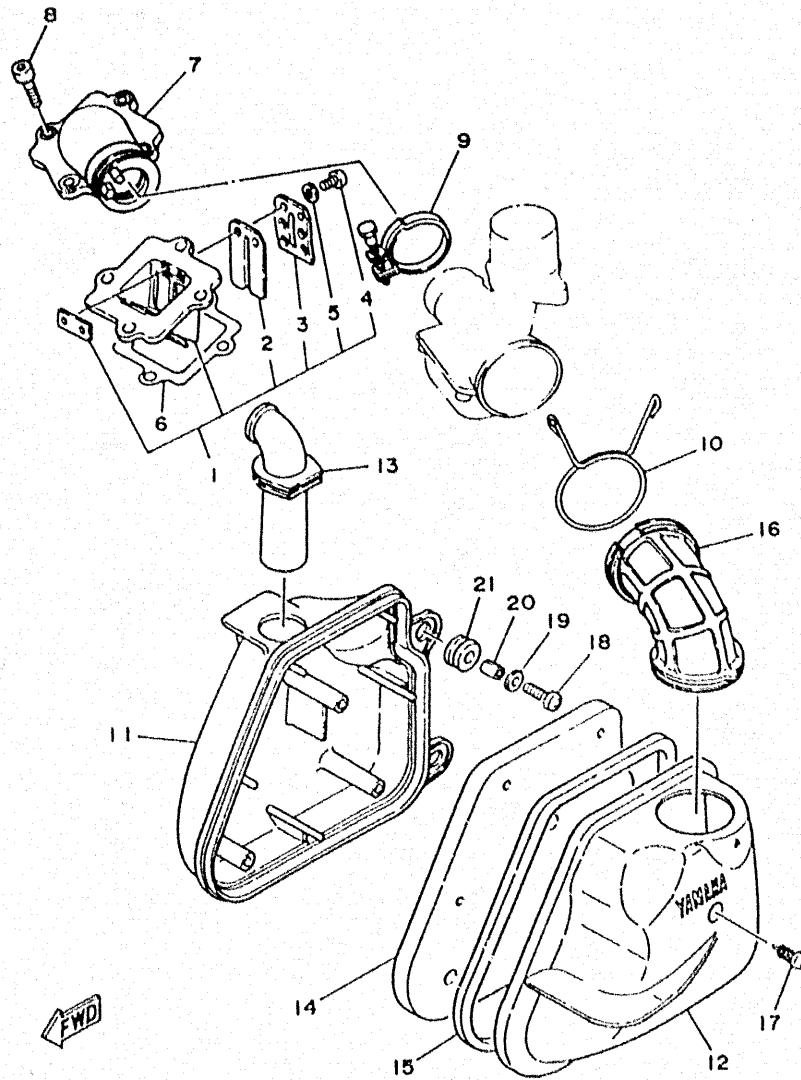
REF. NO.	PART NO.	DESCRIPTION	Q'TY	REMARKS
1	4CU-E2651-00	AIR SHROUD, CYLINDER 1	1	
2	90480-10468	GROMMET	2	
3	4FW-E2653-00	AIR SHROUD, CYLINDER 3	1	
4	90387-067V1	COLLAR	2	
5	90480-12497	GROMMET	2	
6	98507-06020	SCREW, PAN HEAD	2	
7	92907-06600	WASHER, PLATE	2	
8	97707-60540	SCREW, TAPPING	1	
9	4FW-12658-00	DAMPER, AIR SHROUD 1	3	
10	4MJ-E2611-00	FAN	1	
11	93210-64488	O-RING	1	
12	98507-06016	SCREW, PAN HEAD	3	
13	92907-06100	WASHER, SPRING	3	
14	92907-06600	WASHER, PLATE	3	

FIG. 4 - OIL PUMP



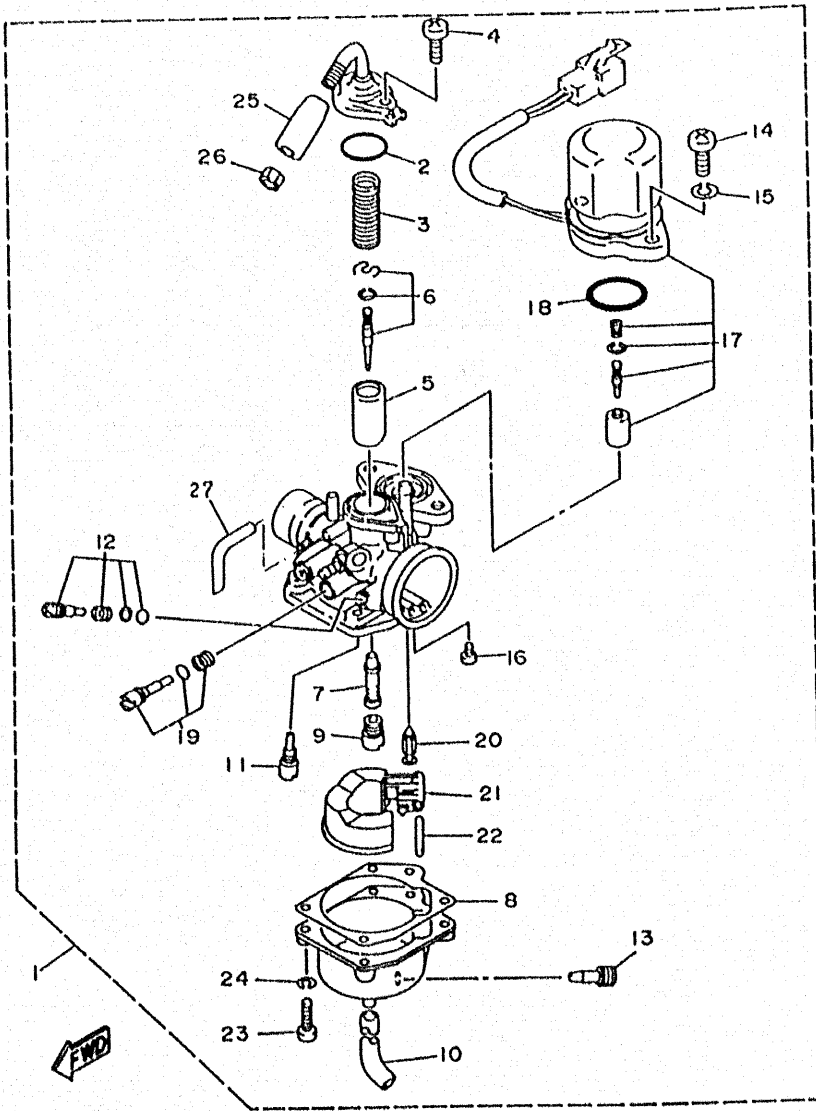
REF. NO.	PART NO.	DESCRIPTION	Q'TY	REMARKS
1	3KJ-13100-01	OIL PUMP ASSY	1	
2	3WF-13185-00	• BOLT, BREATHER	1	
3	1YU-13187-00	• GASKET, BREATHER	1	
4	1YU-13473-00	• O-RING	1	
5	3AA-13124-00	• GEAR WORM WHEEL (40T)	1	
6	1YU-13516-00	• PIN, DOWEL	1	
7	1YU-13577-00	• CLIP	1	
8	90445-09304	• HOSE	1	
9	90467-08003	• CLIP	2	
10	90445-05431	• HOSE	1	
11	90468-02033	• CLIP	1	
12	90468-02033	CLIP	1	
13	98501-05014	SCREW, PAN HEAD	2	
14	2GM-13178-00	GEAR, PUMP DRIVE	1	
15	93603-12007	PIN, DOWEL	1	
16	99009-19400	CIRCLIP	2	

FIG. 5 - INTAKE



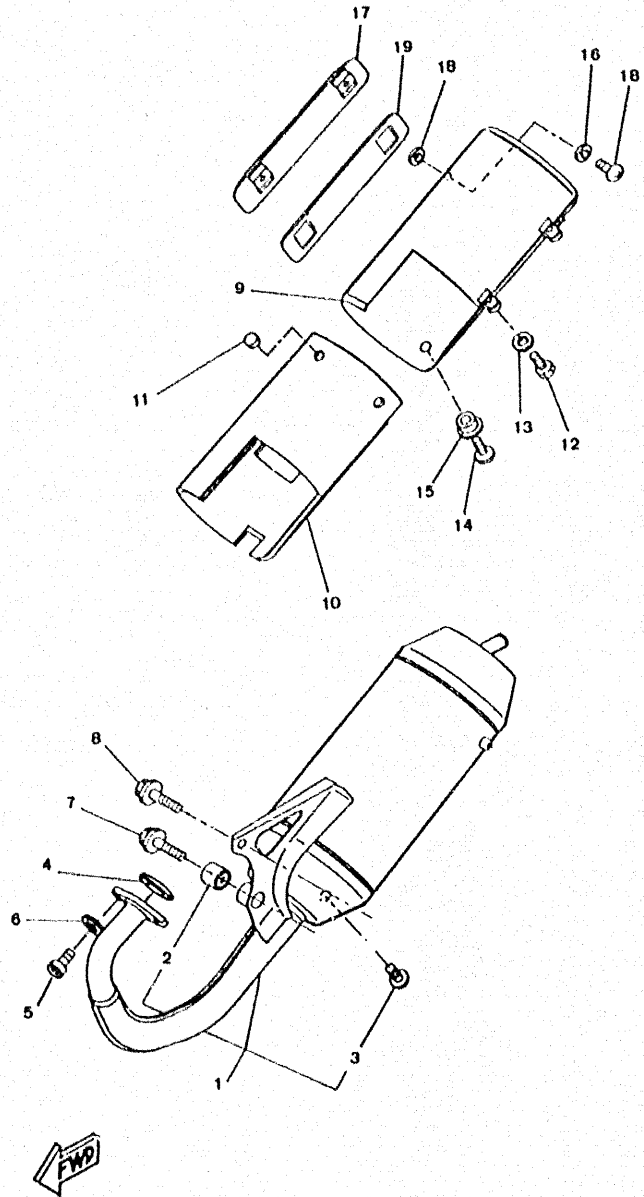
REF. NO.	PART NO.	DESCRIPTION	Q'TY	REMARKS
1	4CU-E3610-00	READ VALVE ASSY	1	
2	4CU-E3613-00	• REED, VALVE	2	
3	4CU-E3616-00	• STOPPER, REED VALVE	2	
4	98507-03008	• SCREW, PAN HEAD	4	
5	92907-03600	• WASHER, PLATE	4	
6	4CU-E3621-00	GASKET, VALVE SEAT	1	
7	4CU-E3555-00	MANIFOLD, INTAKE	1	
8	91318-06020	BOLT	4	
9	3JX-F311E-00	BAND 2	1	
10	90467-24140	CLIP	1	
11	3WG-E4411-00	CASE, AIR CLEANER 1	1	
12	3WG-E4412-00	CAP, CLEANER CASE 1	1	
13	3WG-E4437-00	DUCT	1	
14	3WG-E4451-00	ELEMENT, AIR CLEANER	1	
15	3WG-E4452-00	SEAL	1	
16	3WG-E4453-00	JOINT, AIR CLEANER 1	1	
17	97701-50525	SCREW, TAPPING	3	
18	98506-06020	SCREW, PAN HEAD	2	
19	90201-06815	WASHER, PLATE	2	
20	90387-067V1	COLLAR	2	
21	90480-12497	GROMMET	2	

FIG. 6 - CARBURETOR



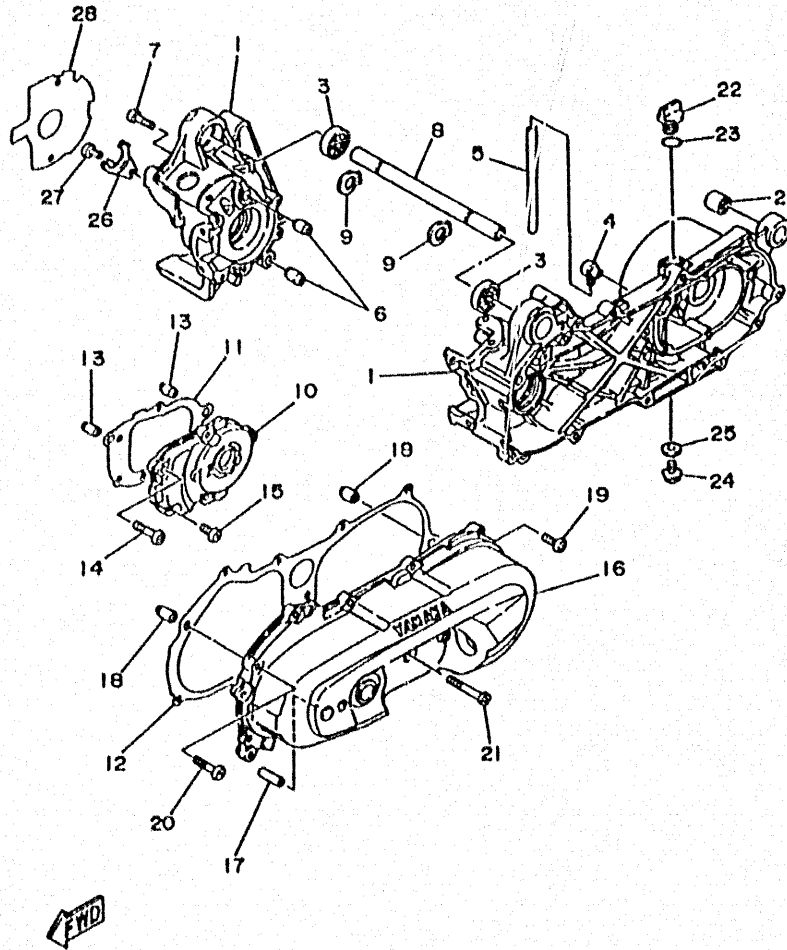
REF. NO.	PART NO.	DESCRIPTION	QTY	REMARKS
1	4SN-14301-00	CARBURETOR ASSY 1	1	
2	4JP-14561-00	• O-RING	1	
3	1YU-14331-00	• SPRING, THROTTLE VALVE	1	
4	98580-05014	• SCREW, PAN HEAD	1	
5	3KJ-14312-30	• VALVE, THROTTLE 1	1	
6	4FK-1490J-01	• NEEDLE SET	1	
7	14T-14341-00	• NOZZLE, MAIN	1	
8	14T-14384-00	• GASKET, FLOAT CHAMBER	1	
9	14T-14343-36	• JET, MAIN (#72)	1	
10	3KJ-14349-01	• PIPE	1	
11	3KJ-14353-18	• JET, PILOT	1	
12	4JP-14104-00	• AIR SCREW SET	1	
13	14T-14323-00	• AIR SCREW SET	1	
14	98580-06016	• SCREW, PAN HEAD	1	
15	92907-06100	• WASHER, SPRING	1	
16	98581-03006	• SCREW, PAN HEAD	1	
17	3WF-1410A-10	• STARTER SET	1	
18	1HV-14147-00	• O-RING	1	
19	3YJ-14103-00	• THROTTLE SCREW SET	1	
20	2JA-14392-00	• VALVE, NEEDLE	1	
21	1HV-14385-01	• FLOAT	1	
22	367-14386-00	• PIN, FLOAT	1	
23	98580-04016	• SCREW, PAN HEAD	1	
24	92990-04100	• WASHER, SPRING	1	
25	3KJ-26329-00	• CAP, RUBBER	1	
26	288-14161-00	• NUT, CABLE ADJUSTING	1	
27	2JA-14397-00	• O-RING	1	

FIG. 7 - EXHAUST



REF. NO.	PART NO.	DESCRIPTION	Q'TY	REMARKS
1	4SN-E4610-20	EXHAUST PIPE ASSY 1	1	
2	2JA-14737-00	DAMPER, MUFFLER	1	
3	NH7-91810-00	VIS SIM	1	
4	3WG-E4613-00	GASKET, EXHAUST PIPE	1	
5	91311-06020	BOLT	2	
6	90201-062A8	WASHER, PLATE	2	
7	95817-08040	BOLT, FLANGE	1	
8	95826-08025	BOLT, FLANGE	1	
9	4LN-E4718-00	PROTECTOR, MUFFLER 1	1	
10	3AA-1469A-01	FIBER	1	
11	3AA-14653-00	GASKET, EXHAUST 4	3	
12	3VL-E4777-00	BOLT	2	
13	NE5-31891-00	WASHER, PLATE	2	
14	98907-06014	SCREW, BIND	2	
15	4FG-E4638-00	COLLAR	2	
16	3WX-14766-00	WASHER, PROTECTOR	4	
17	3VL-E4729-00	EMBLEM, PROTECTOR	1	
18	NJ6-54041-00	VIS POZIDIV	2	
19	4FG-14747-00	DAMPER, MUFFLER	1	

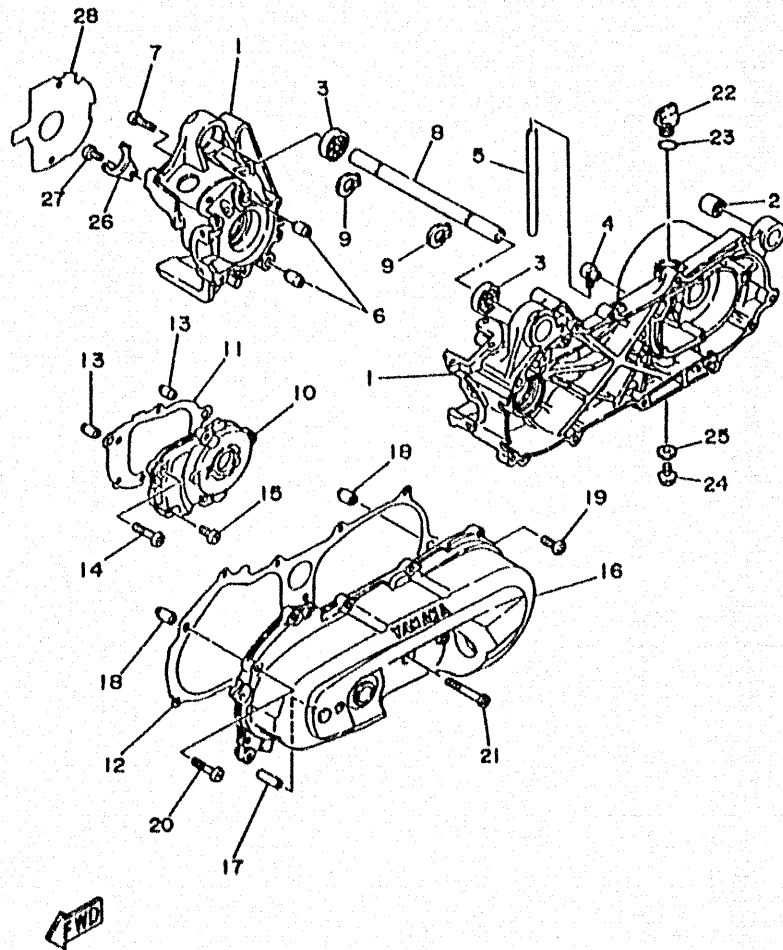
FIG. 8 - CRANKCASE



REF. NO.	PART NO.	DESCRIPTION	Q'TY	REMARKS
1	4KH-E5150-00	CRANKCASE ASSY	1	
2	164-22216-00	BUSK, REAR SHOCK ABSORBER	1	
3	93306-00319	BEARING	1	
4	4CU-E5371-00	BREATHER	1	
5	90446-11347	TUBE, FLEXIBLE VINYL	1	
6	99530-12016	PIN, DOWEL	2	
7	98501-06035	SCREW, PAN HEAD	6	
8	4CU-E5317-00	SPACER, ENGINE MOUNT	1	
9	99009-17400	CIRCLIP	2	
10	4CU-E5421-00	COVER, CRANKCASE 2	1	
11	4CU-E5461-00	GASKET, CRANKCASE COVER 2	1	
12	4CU-E5451-00	GASKET, CRANKCASE COVER 1	1	
13	99530-10014	PIN, DOWEL	2	
14	98507-06035	SCREW, PAN HEAD	2	
15	98507-06020	SCREW, PAN HEAD	3	
16	4CU-E5411-00	COVER, CRANKCASE 1	1	
17	4CU-E5659-00	SHAFT	1	
18	99530-10114	PIN, DOWEL	2	
19	98507-06025	SCREW, PAN HEAD	8	
20	98507-06035	SCREW, PAN HEAD	2	
21	98507-06065	SCREW, PAN HEAD	1	
22	3VL-E5363-00	PLUG, OIL	1	
23	93210-14104	O-RING	1	
24	95801-08016	BOLT, FLANGE	1	
25	90430-08119	WASHER, PLATE	1	
26	3VL-E5128-00	HOLDER	1	
27	98507-06012	SCREW, PAN HEAD	1	

FIG. 8 - CRANKCASE

REF. NO.	PART NO.	DESCRIPTION	Q'TY	REMARKS
28	4CU-E5462-00	GASKET, CRANKCASE COVER 3	1	



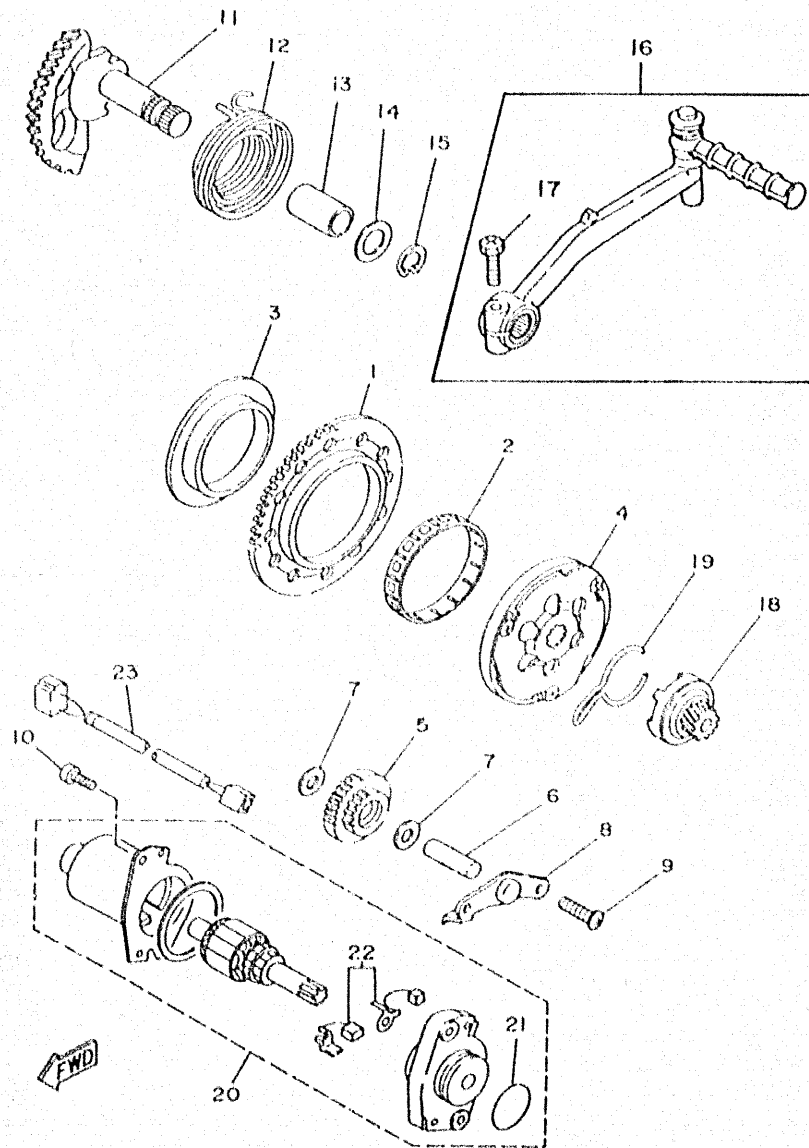
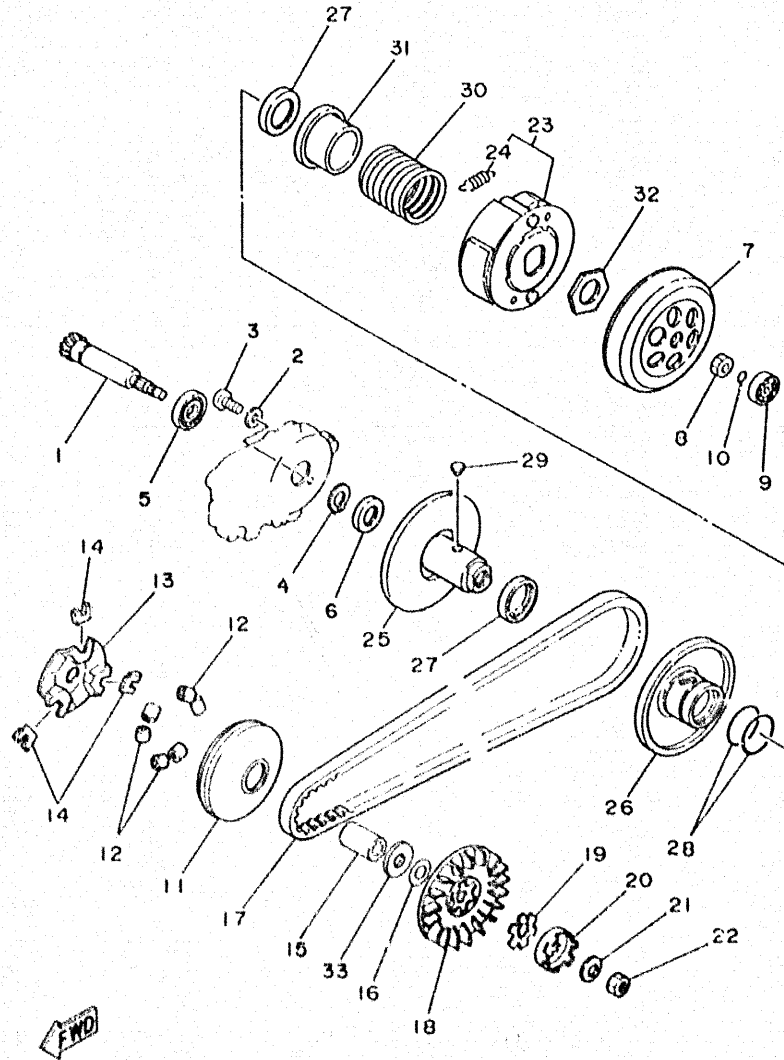


FIG. 9 - STARTER

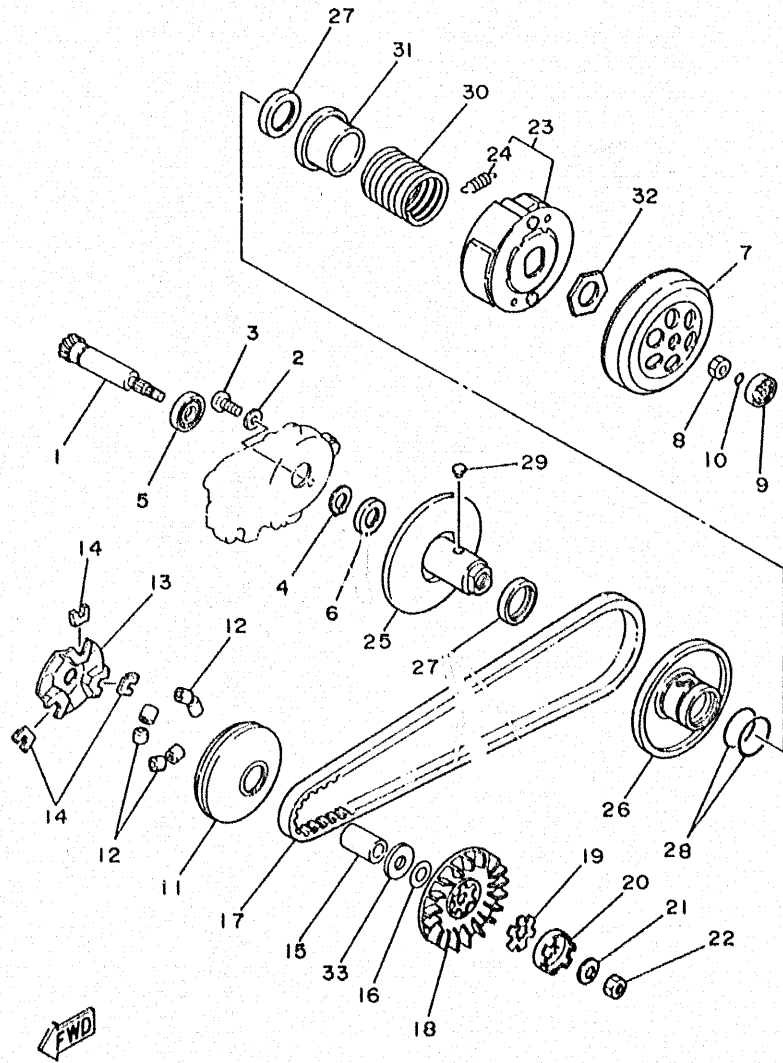
REF. NO.	PART NO.	DESCRIPTION	Q'TY	REMARKS
1	3AA-15513-00	GEAR 1	1	
2	93310-257R1	BEARING, CYLINDRICAL	1	
3	3KJ-15528-00	BOSS, GEAR	1	
4	3VL-15570-00	STARTER CLUTCH ASSY	1	
5	3AA-15650-00	IDLE GEAR ASSY	1	
6	3VL-E5659-00	SHAFT	1	
7	96201-08088	WASHER, PLATE	2	
8	4CU-E5532-00	PLATE, IDLE GEAR	1	
9	98501-06012	SCREW, PAN HEAD	2	
10	91318-06020	BOLT	2	
11	3KJ-15601-00	KICK SHAFT ASSY	1	
12	90508-32609	SPRING TORSION	1	
13	90380-15083	BUSH, SOLID	1	
14	90201-155G5	WASHER, PLATE	1	
15	99009-15400	CIRCLIP	1	
16	4CU-X5620-00	KICK CRANK ASSY	1	
17	97316-06025	BOLT	1	
18	4CU-E5630-00	KICK PINION ASSY	1	
19	4CU-E5673-00	CLIP	1	
20	3KJ-81800-01	STARTING MOTOR ASSY	1	
21	93210-23614	O-RING	1	
22	1YU-81801-M0	BRUSH SET	1	
23	3WG-H2541-00	WIRE, LEAD	1	

FIG. 10 - CLUTCH



REF. NO.	PART NO.	DESCRIPTION	Q'TY	REMARKS
1	4CU-16111-00	GEAR, PRIMARY DRIVE	1	
2	90201-06412	WASHER, PLATE	1	
3	98501-06010	SCREW, PAN HEAD	1	
4	99009-17400	CIRCLIP	1	
5	93306-00308	BEARING (B6003)	1	
6	93102-17342	OIL SEAL	1	
7	3YJ-16611-00	CLUTCH HOUSING COMP.	1	
8	90170-10317	NUT	1	
9	93300-63813	BEARING	1	
10	93210-06550	O-RING	1	
11	4CU-E7620-00	PRIMARY SLIDING SHEAVE COMP.	1	
12	4CU-E7632-00	WEIGHT	6	
13	3VL-E7623-00	CAM	1	
14	3VL-E7653-00	SLIDER	3	
15	90387-135U9	COLLAR	1	
16	90201-136P4	WASHER, PLATE	1	
17	3VP-17641-00	V-BELT	1	
18	3VL-E7611-00	SHEAVE, PRIMARY FIXED	1	
19	90214-13055	WASHER, CLAW	1	
20	3VL-E5657-00	CLUTCH, ONEWAY	1	
21	90208-10012	WASHER, CONICAL SPRING	1	
22	90170-10219	NUT	1	
23	4CX-16620-00	CLUTCH CARRIER ASSY	1	
24	3VR-16626-00	• SPRING, CLUTCH WEIGHT 1	3	
25	3AA-17660-01	SECONDARY FIXED SHEAVE COMP.	1	
26	3AA-17670-00	SECONDARY SLIDING SHEAVE	1	
27	93109-33049	OIL SEAL	2	

FIG. 10 - CLUTCH



REF. NO.	PART NO.	DESCRIPTION	Q'TY	REMARKS
28	93210-38687	O-RING	2	
29	24G-17664-00	PIN, GUIDE	2	
30	90501-357F3	SPRING, COMPRESSION	1	
31	3KJ-17684-00	SEAT, SECONDARY SPRING	1	
32	90179-28415	NUT	1	
33	4HU-E7654-00	SPACER 1	1	

FIG. 11 - TRANSMISSION

REF. NO.	PART NO.	DESCRIPTION	Q'TY	REMARKS
1	4CU-E7410-00	MAIN AXLE COMP.	1	
2	93306-20006	BEARING (B6200)	1	
3	90201-123K4	WASHER, PLATE	1	
4	90208-12049	WASHER, CONICAL SPRING	1	
5	4CU-E7420-00	DRIVE AXLE ASSY	1	
6	93306-20346	BEARING	1	
7	93102-22082	OIL SEAL	1	
8	93420-40064	CIRCLIP	1	

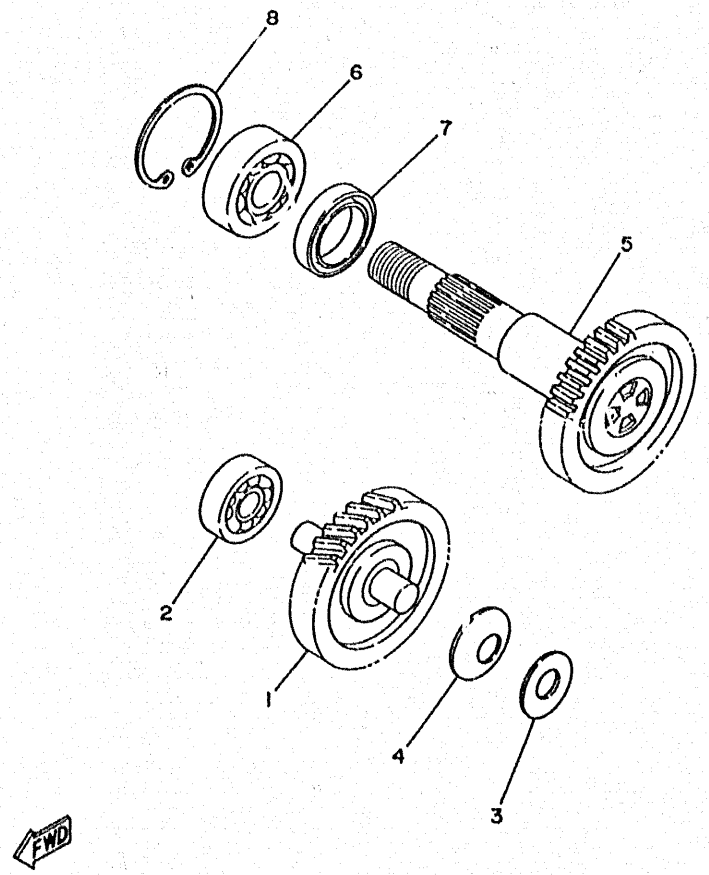
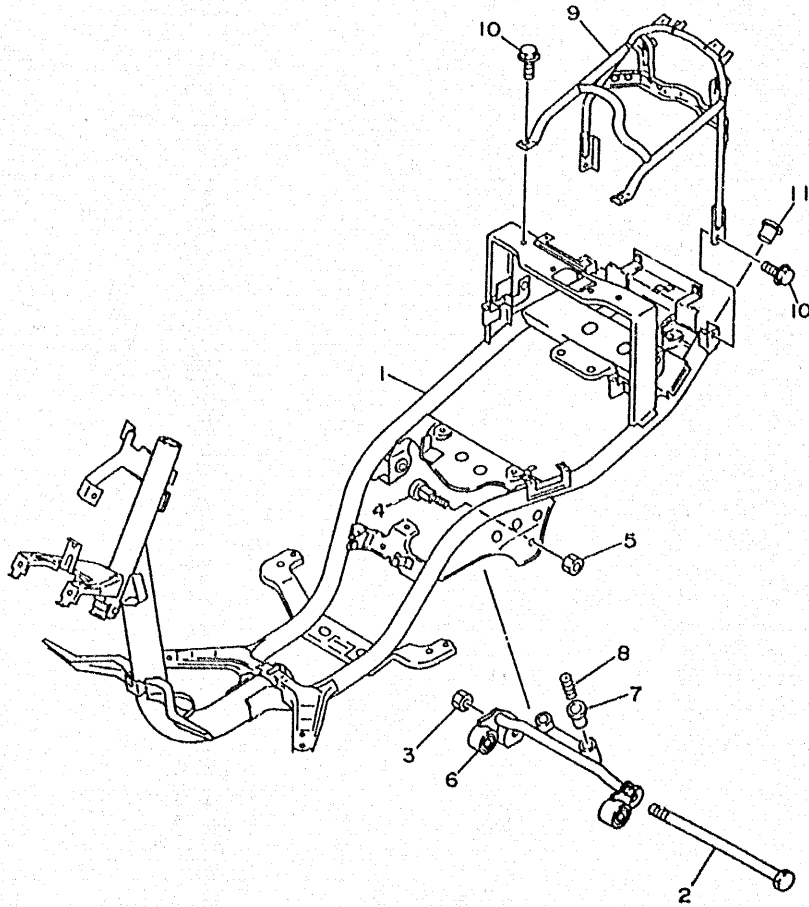


FIG. 12 - FRAME



REF. NO.	PART NO.	DESCRIPTION	Q'TY	REMARKS
1	4MJ-F1110-00	FRAME COMP.	1	
2	3KJ-21481-00	BOLT, ENGINE MOUNTING 1	1	
3	95607-12200	NUT, SELF-LOCKING	1	
4	3WG-F1481-10	BOLT, ENGINE MOUNTING 1	2	
5	90185-10822	NUT, SELF-LOCKING	2	
6	3WG-F1410-00	ENGINE BRACKET COMP.	1	
7	3WG-F139X-00	DAMPER	2	
8	90501-29517	SPRING, COMPRESSION	2	
9	4MJ-F1232-00	REINF, TAIL	1	
10	95806-06012	BOLT, FLANGE	4	
11	4PC-F117M-00	COVER, 2	2	

CONTENTS

ENGINE

CYLINDER HEAD.....	B2
CRANKSHAFT. PISTON.....	B3
AIR SHROUD. FAN.....	B4
OIL PUMP.....	B5
INTAKE.....	B6
CARBURETOR.....	B7
EXHAUST.....	B8
CRANKCASE.....	B9-B10
STARTER.....	B11
CLUTCH.....	B12-B13
TRANSMISSION.....	B14

CHASSIS

FRAME.....	B15
FENDER.....	C2
SIDE COVER.....	C3
OIL TANK.....	C4
REAR SUSPENSION.....	C5
FRONT FORK.....	C6
FUEL TANK.....	C7
SEAT. CARRIER.....	C8
FRONT WHEEL.....	C9-C10
REAR WHEEL.....	C11
STEERING HANDLE. CABLE.....	C12
STANT. FOOTREST.....	C13
LEG SHIELD.....	C14
COWLING.....	C15

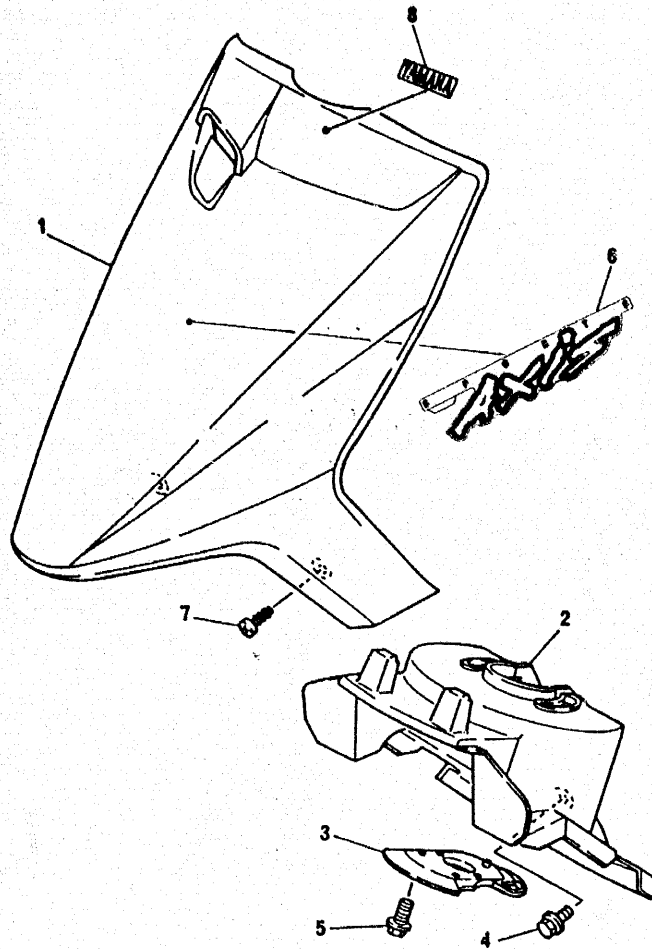
ELECTRICAL

GENERATOR.....	D2
METER.....	D3
HEADLIGHT.....	D4
TAILLIGHT.....	D5
HANDLE SWITCH. LEVER.....	D6
ELECTRICAL 1.....	D7
ELECTRICAL 2.....	D8

INDEX

NUMERICAL INDEX.....	M1 ~ M2
----------------------	---------

FIG. 13 - FENDER



REF. NO.	PART NO.	DESCRIPTION	Q'TY	REMARKS
1	4MJ-F1511-00-4B	FENDER, FRONT	1	UR BLACK 2
	4MJ-F1511-00-0M	FENDER, FRONT	1	UR SWEET HEART RED
2	4PC-F1552-00	FENDER, INNER	1	
3	3WG-F1553-00	FENDER, INNER 2	1	
4	95806-06012	BOLT, FLANGE	1	
5	90119-06044	BOLT, WITH WASHER	2	
6	4SJ-F1569-30	GRAPHIC 1	1	UR for BL2
	4SJ-F1569-40	GRAPHIC 1	1	UR for SHR
7	97706-50016	SCREW, TAPPING	2	
8	99236-00080	EMBLEM, YAMAHA	1	

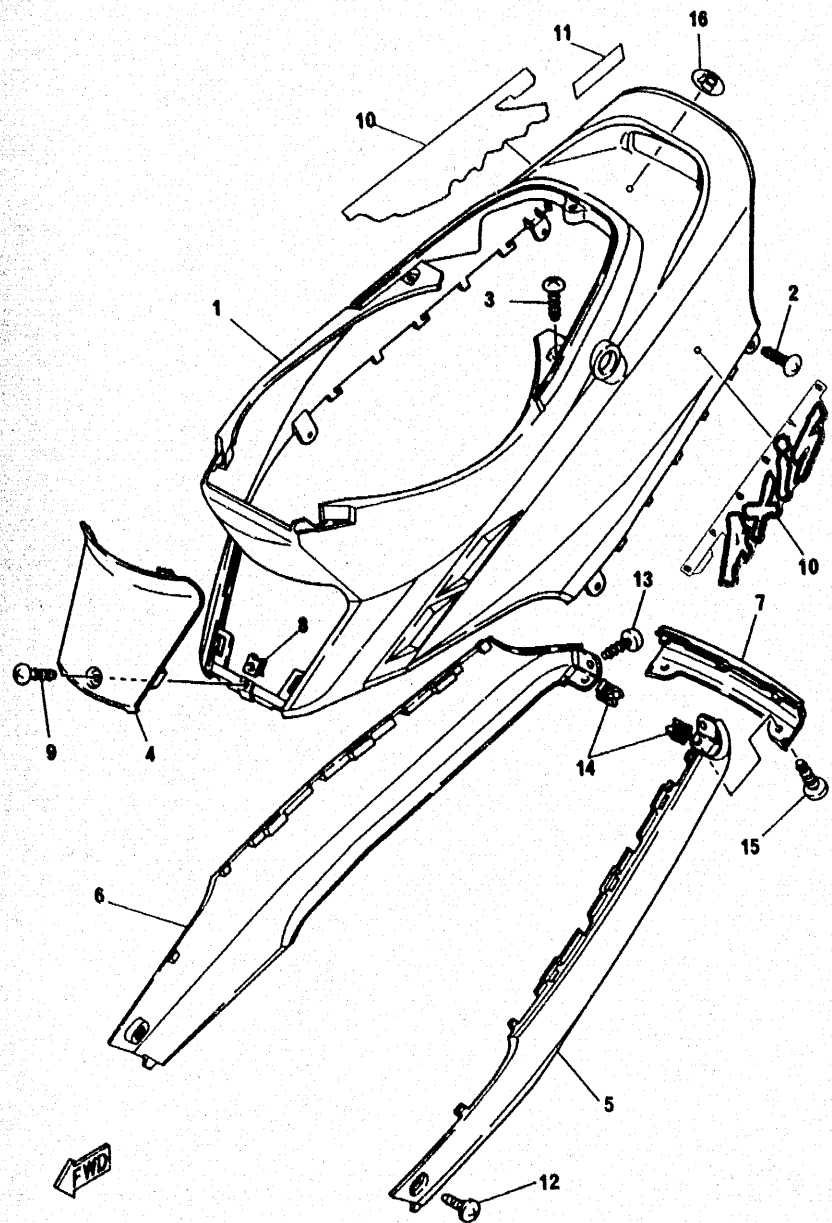


FIG. 14 - SIDE COVER

REF. NO.	PART NO.	DESCRIPTION	Q'TY	REMARKS
1	4MJ-F1711-00-4B	COVER, SIDE 1	1	UR BLACK 2
	4MJ-F1711-00-0M	COVER, SIDE 1	1	UR SWEET HEART RED
2	97706-50016	SCREW, TAPPING	4	
3	97706-50016	SCREW, TAPPING	3	
4	4MJ-F1721-00-4B	COVER, SIDE 2	1	UR BLACK 2
	4MJ-F1721-00-0M	COVER, SIDE 2	1	UR SWEET HEART RED
5	4PC-F171L-20	MOLE, SIDE COVER 1	1	UR LOW GLOSS GRAY
6	4PC-F171M-20	MOLE, SIDE COVER 2	1	UR LOW GLOSS GRAY
7	4MJ-F171N-20	MOLE, SIDE COVER 3	1	UR LOW GLOSS GRAY
8	90183-05042	NUT, SPRING	1	
9	90167-05055	SCREW, TAPPING	1	
10	4SJ-F1782-30	EMBLEM 2	2	UR for BL2
11	4SJ-F1782-40	EMBLEM 2	2	UR for SHR
	4SN-F1789-00	GRAPHIC	1	
12	90149-06184	SCREW	2	
13	97706-50016	SCREW, TAPPING	2	
14	90183-05042	NUT, SPRING	2	
15	97706-50016	SCREW, TAPPING	2	
16	4SN-F415A-00	LABEL, CAUTION	1	

FIG. 15 - OIL TANK

REF. NO.	PART NO.	DESCRIPTION	Q'TY	REMARKS
1	4MJ-F1751-00	TANK, OIL	1	
2	3WG-F1771-00	BODY, CAP	1	
3	90119-06042	BOLT, WITH WASHER	2	

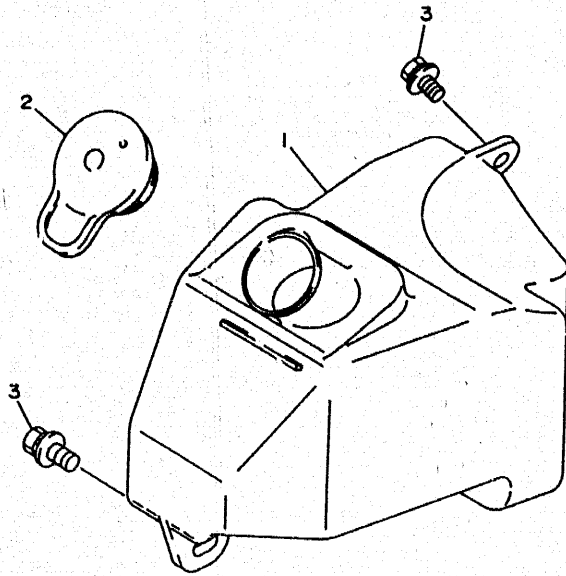
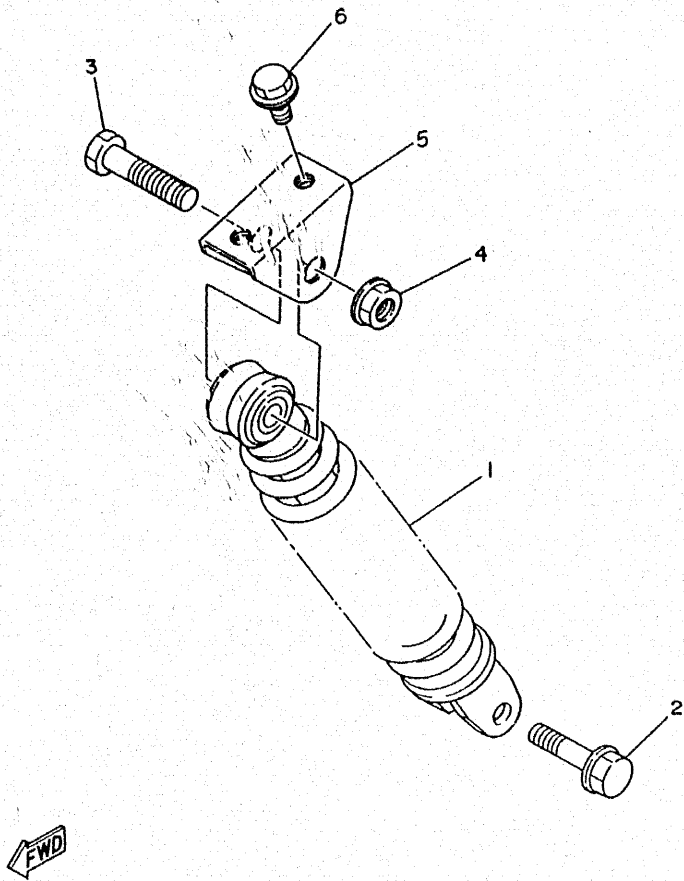
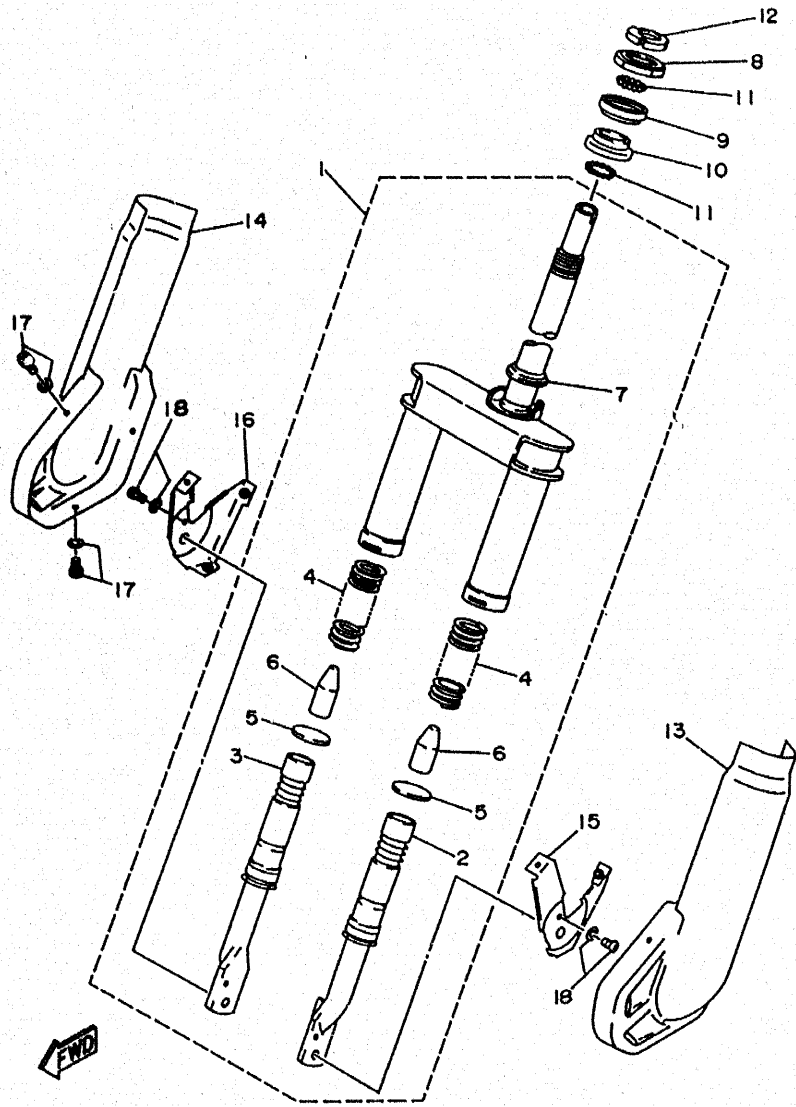


FIG. 16 - REAR SUSPENSION



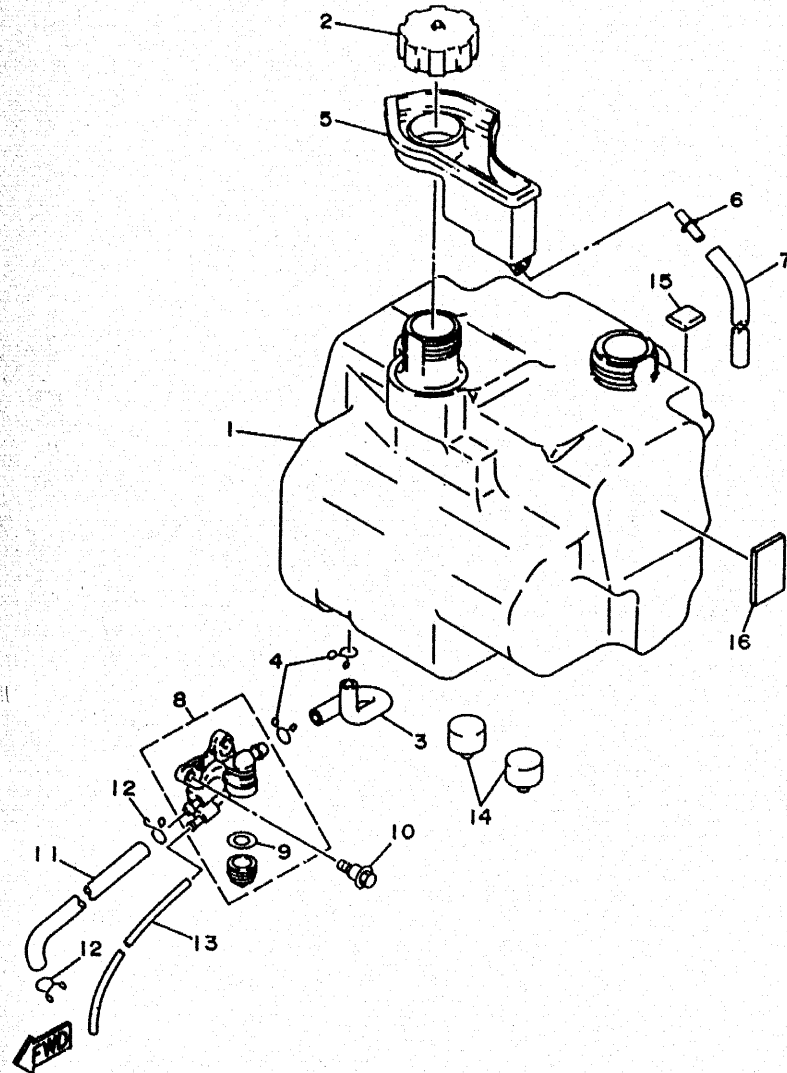
REF. NO.	PART NO.	DESCRIPTION	Q'TY	REMARKS
1	4MJ-F2210-A0-33	SHOCK ABSORBER ASSY, REAR	1	UR YAMAHA BLACK
2	90105-08121	BOLT, WASHER BASED	1	
3	90102-10872	BOLT 1	1	
4	90185-10822	NUT, SELF-LOCKING	1	
5	3WG-F1381-00	BRACKET, REAR SHOCK ABSORBER	1	
6	95821-08012	BOLT, FLANGE	2	

FIG. 17 - FRONT FORK



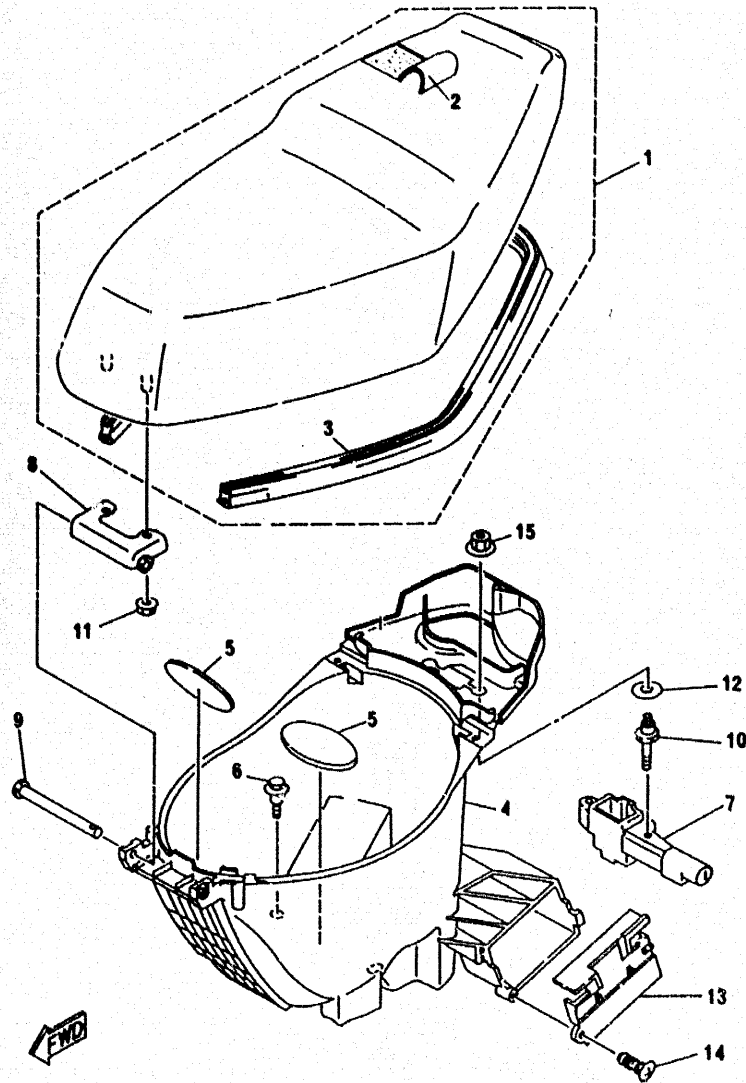
REF. NO.	PART NO.	DESCRIPTION	Q'TY	REMARKS
1	4MJ-F3100-00	FRONT FORK ASSY	1	
2	4MJ-F3110-00	• INNER TUBE COMP. 1	1	
3	4MJ-F3120-00	• INNER TUBE COMP. 2	1	
4	4MJ-F3141-00	• SPRING, FRONT FORK	2	
5	3WG-F3143-00	• SEAT, SPRING LOWER	2	
6	4CX-F3195-00	• RUBBER	2	
7	4MJ-F3414-00	• RACE, BALL 4	1	
8	3WG-F3411-00	RACE, BALL 1	1	
9	2E9-23412-00	RACE, BALL 2	1	
10	2E9-23413-01	RACE, BALL 3	1	
11	93505-32002	BALL	52	
12	1TK-F3454-00	NUT, FITTING 2	1	
13	4MJ-F3122-00	COVER, OUTER 1	1	UR LOW GLOSS GRAY
14	4MJ-F3132-00	COVER, OUTER 2	1	UR LOW GLOSS GRAY
15	4MJ-F334G-01	BRKT. 1	1	
16	4MJ-F334H-01	BRKT. 2	1	
17	97606-05210	SCREW, PAN HEAD/WASHER	6	
18	97601-05110	SCREW, PAN HEAD/WASHER	2	

FIG. 18 - FUEL TANK



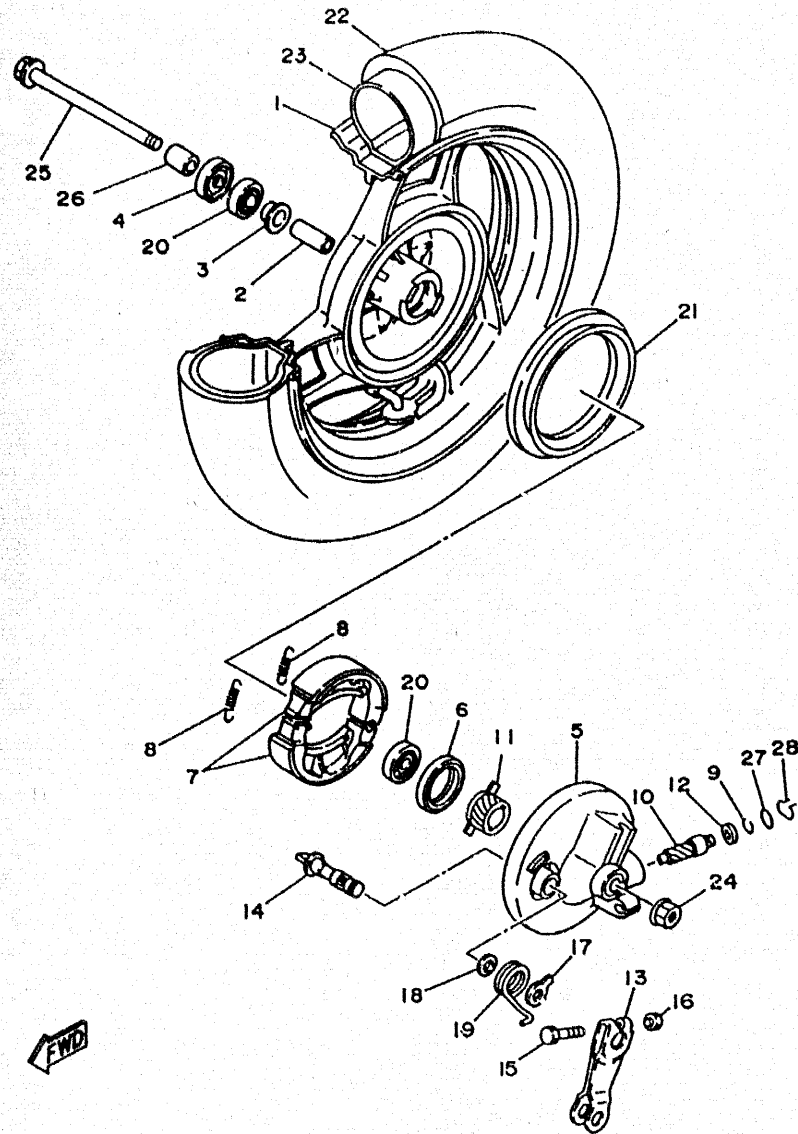
REF. NO.	PART NO.	DESCRIPTION	Q'TY	REMARKS
1	4SN-F4111-01	TANK, FUEL	1	
2	4MJ-F4610-00	CAP ASSY	1	
3	4MJ-F4312-00	PIPE 2	1	
4	90467-11010	CLIP	2	
5	4MJ-F414A-01	COVER, FILLER	1	
6	90560-06366	SPACER	1	
7	4MJ-F416A-00	HOSE	1	
8	3KJ-24500-01	FUEL COCK ASSY 1	1	
9	4X8-24565-00	GASKET	1	
10	90109-063F5	BOLT	2	
11	4MJ-F4311-00	PIPE, FUEL 1	1	
12	90467-09006	CLIP	2	
13	90445-07434	HOSE	1	
14	2JW-F7114-00	STOPPER, MAIN STAND	4	
15	2E9-24182-00	DAMPER, LOCATING 2	4	
16	4MJ-F4183-00	DAMPER, LOCATING 3	2	

FIG. 19 - SEAT



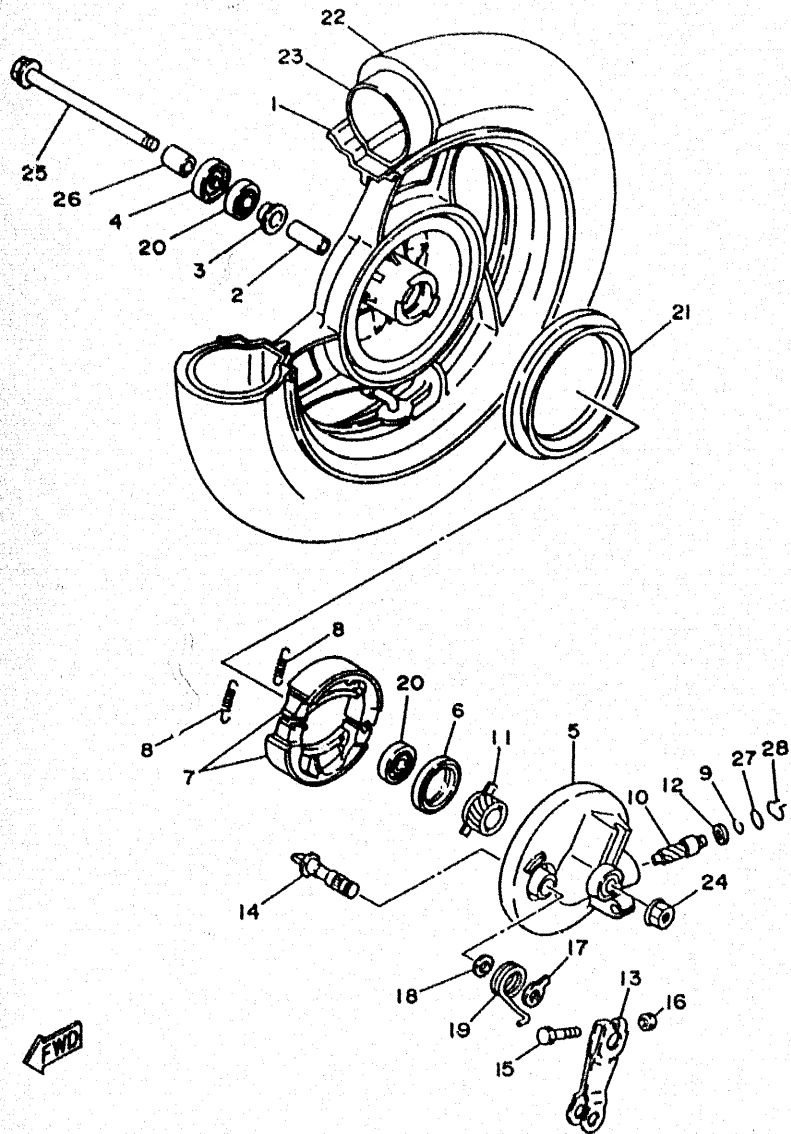
REF. NO.	PART NO.	DESCRIPTION	QTY	REMARKS
1	4MJ-F4730-A0	DOUBLE SEAT ASSY	1	UR YAMAHA BLACK
2	4MJ-F4711-00	• COVER, SINGLE SEAT	1	UR YAMAHA BLACK
3	4MJ-F475M-00	• SEAL	1	
4	4MJ-F473R-01	BOX 1	1	
5	4MJ-F4747-00	DAMPER, SEAT	3	
6	90109-063F1	BOLT	2	
7	4MJ-F4780-01	SEAT LOCK ASSY	1	
8	3WG-F4726-00	HINGE, SEAT	1	
9	90241-10015	PIN	1	
10	3VP-24717-00	BOLT, SEAT FITTING	2	
11	90179-06403	NUT	2	
12	90201-08107	WASHER, PLATE	2	
13	3WG-H2129-00	COVER, BATTERY	1	
14	90167-05041	SCREW, TAPPING	1	
15	90179-06403	NUT	2	

FIG. 20 - FRONT WHEEL



REF. NO.	PART NO.	DESCRIPTION	Q'TY	REMARKS
1	3WG-F5168-00-35	CAST WHEEL, FRONT	1	UR SILVER
2	90560-10289	SPACER	1	
3	3WG-F5116-00	FLANGE, SPACER 2	1	
4	93106-17015	SEAL, OIL	1	
5	3WG-F5121-00-35	PLATE, BRAKE SHOE	1	UR SILVER
6	93102-40367	SEAL, OIL	1	
7	2JL-W2536-10	BRAKE SHOE, COMP.	1	
8	90506-15260	SPRING, TENSION	2	
9	3WG-F5137-00	RING, STOP	1	
10	3WG-F5138-10	GEAR, METER	1	
11	3WG-F5135-10	GEAR, DRIVE	1	
12	90201-068A6	WASHER, PLATE	1	
13	3WG-F5155-00	LEVER, CAMSHAFT 1	1	
14	3Y6-25351-00	CAMSHAFT	1	
15	90101-06278	BOLT	1	
16	95301-06600	NUT	1	
17	5T8-F533A-00	PLATE, INDICATOR	1	
18	3WG-F5159-00	SEAL, CAMSHAFT	1	
19	90508-26393	SPRING, TORSION	1	
20	93306-20005	BEARING (B6200)	2	
21	3WG-F5336-00	RING 2	1	
22	.	TIRE (90/90-10)	1	LM
23	.	TUBE	1	LM
24	90185-10822	NUT, SELF-LOCKING	1	
25	4MJ-F5181-00	AXLE, WHEEL	1	
26	90560-10360	SPACER	1	
27	93210-10010	O-RING	1	

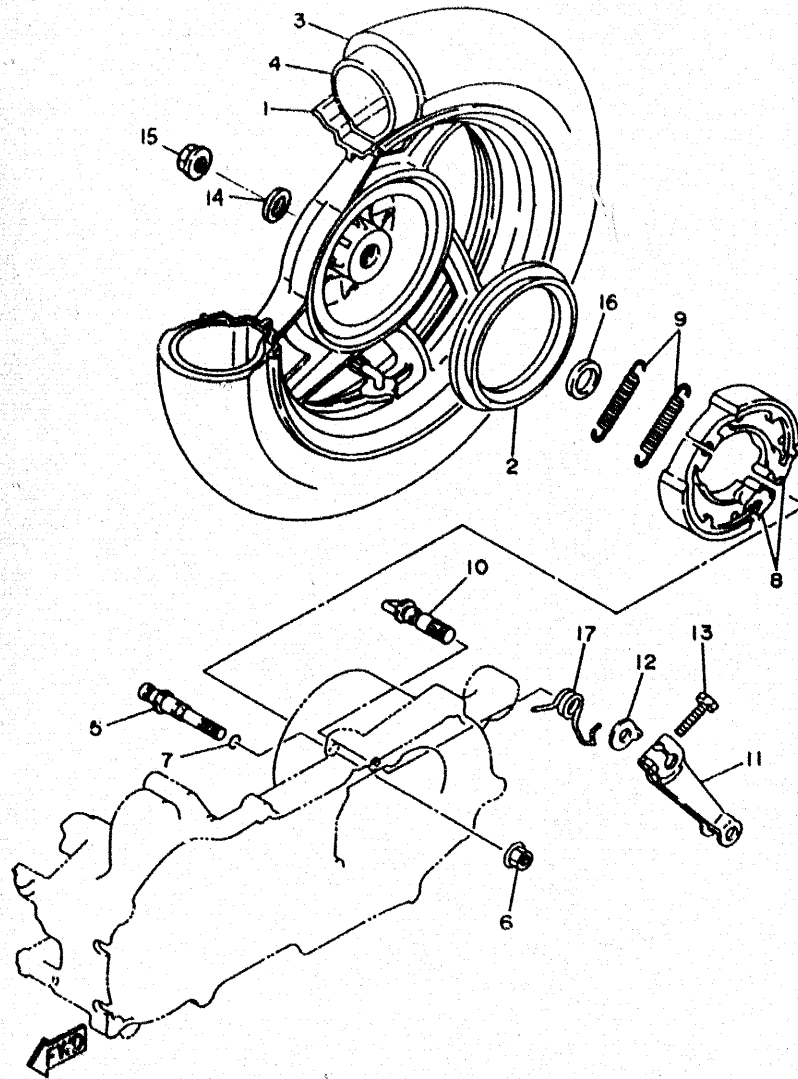
FIG. 20 - FRONT WHEEL



REF. NO.	PART NO.	DESCRIPTION	Q'TY	REMARKS
28	3WG-F5137-10	RING, STOP	1	

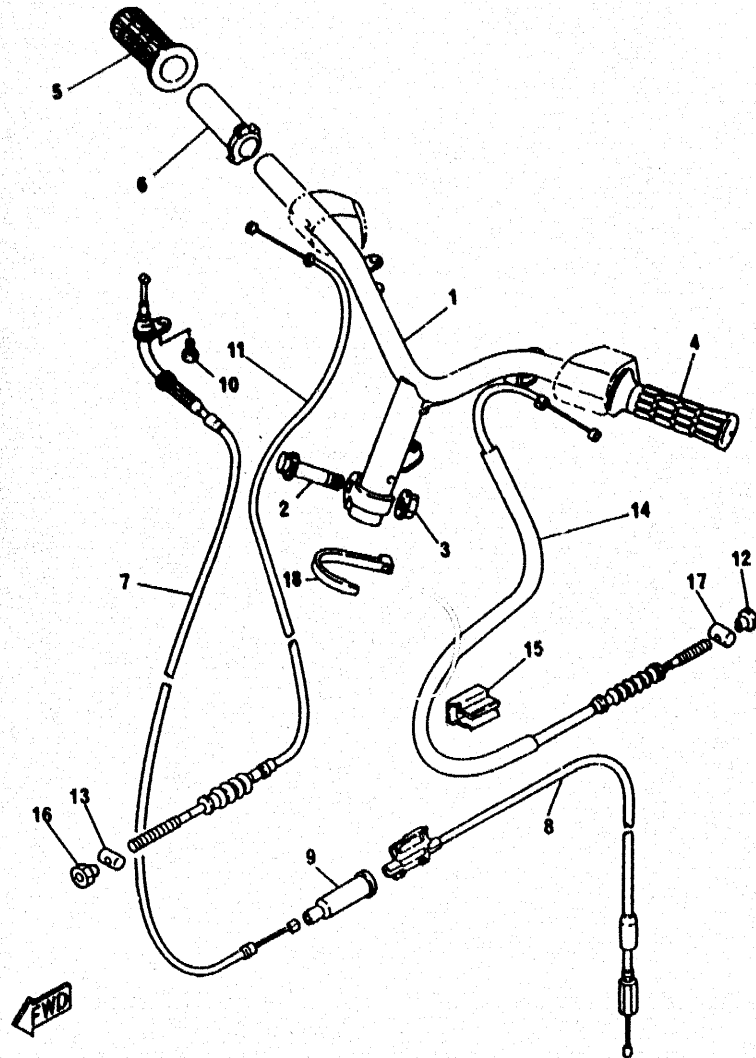
FWD

FIG. 21 - REAR WHEEL



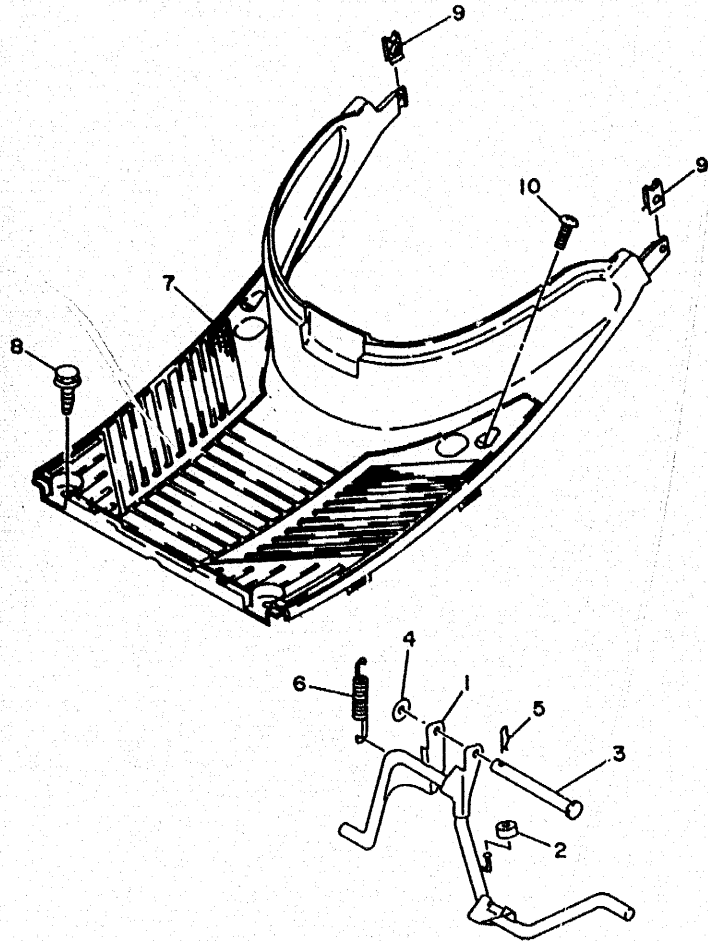
REF. NO.	PART NO.	DESCRIPTION	Q'TY	REMARKS
1	3WG-F5338-00-35	CAST WHEEL, REAR	1	UR SILVER
2	3WG-F5336-00	RING 2	1	
3	"	TIRE (90/90-10)	1	LM
4	"	TUBE	1	LM
5	3KJ-25326-00	PIN, PIVOT	1	
6	95701-08500	NUT, FLANGE	1	
7	93210-07435	O-RING	1	
8	2JL-W2536-10	BRAKE SHOE SET	1	
9	90506-15260	SPRING, TENSION	2	
10	3KJ-25351-01	CAMSHAFT	1	
11	3WG-F5355-00	LEVER, CAMSHAFT	1	
12	3WG-F513A-00	PLATE, INDICATOR	1	
13	90101-06278	BOLT	1	
14	90201-14819	WASHER, PLATE	1	
15	90185-14150	NUT, SELF-LOCKING	1	
16	90201-17898	WASHER, PLATE	1	
17	3WG-F5357-00	SPRING, LEVER RETURN	1	

FIG. 22 - STEERING HANDLE, CABLE



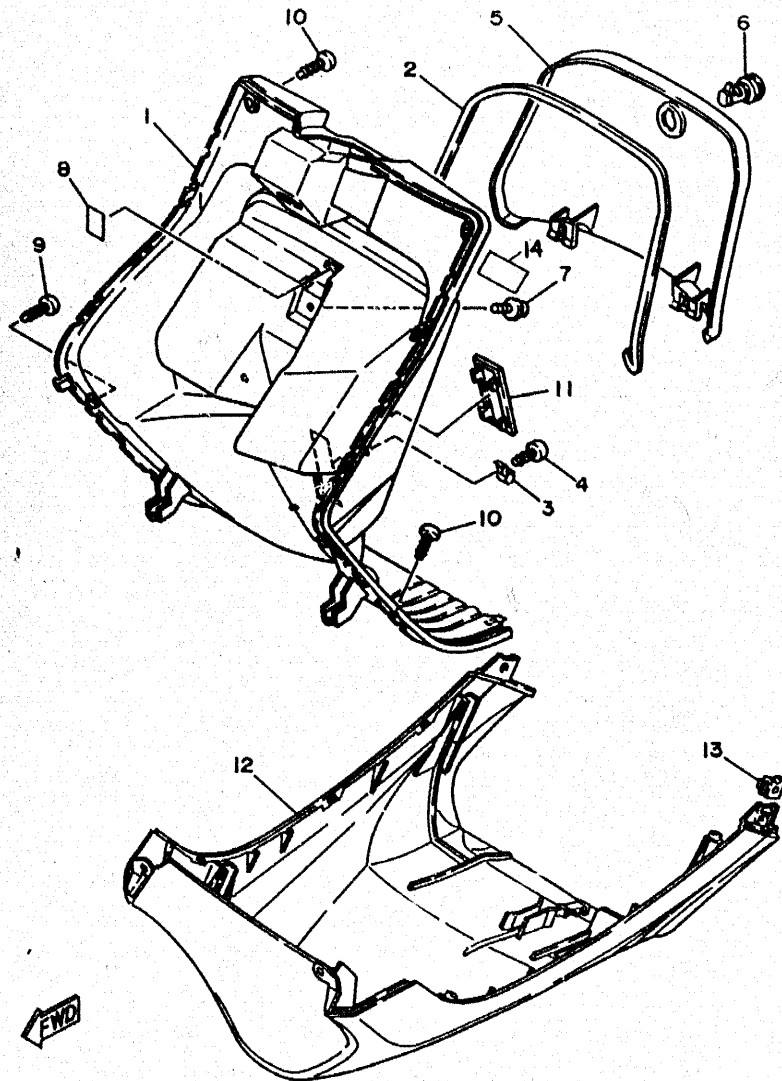
REF. NO.	PART NO.	DESCRIPTION	QTY	REMARKS
1	4PC-F6110-00	HANDLE COMP.	1	
2	90105-10036	BOLT, WASHER BASED	1	
3	90185-10822	NUT, SELF-LOCKING	1	
4	3VL-F6241-00	GRIP (L.H)	1	
5	3VL-F6242-00	GRIP (R.H)	1	
6	3WG-F6243-00	TUBE, THROTTLE GUIDE	1	
7	4PC-F6311-00	CABLE, THROTTLE 1	1	
8	3WG-F6312-C0	CABLE, THROTTLE 2	1	
9	3WG-F6329-00	• CAP, RUBBER	1	
10	98506-05010	SCREW, PAN HEAD	1	
11	4SN-F6341-00	CABLE, BRAKE	1	
12	90179-06176	NUT	1	
13	90249-12008	PIN	1	
14	4PC-F6351-00	CABLE, BRAKE	1	
15	3WG-F6393-00	HOLDER	1	
16	90179-06176	NUT	1	
17	90249-12008	PIN	1	
18	90464-13804	CLAMP	1	

FIG. 23 - STAND, FOOTREST



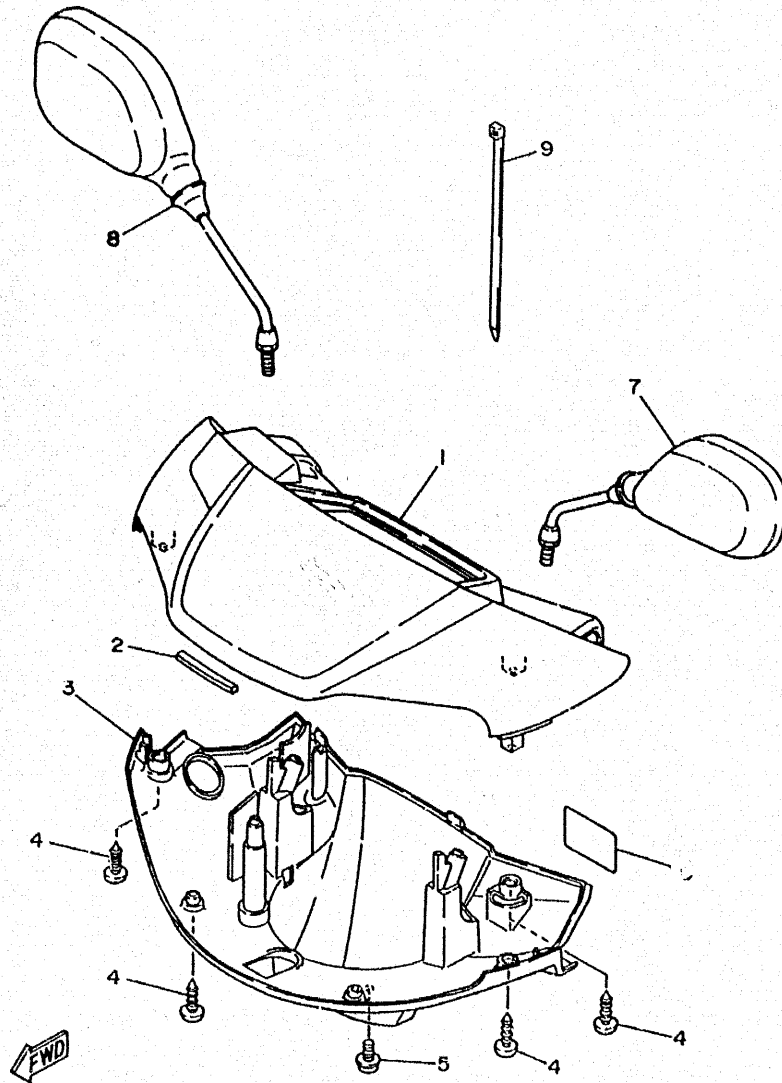
REF. NO.	PART NO.	DESCRIPTION	Q'TY	REMARKS
1	4CX-F7111-00	STAND, MAIN	1	
2	90387-078K5	COLLAR	1	
3	90240-10132	PIN, CLEVIS	1	
4	90202-10120	WASHER, PLATE	1	
5	90468-12006	CLIP	1	
6	90506-32464	SPRING, TENSION	1	
7	4MJ-F7481-10	BOARD, FOOTREST	1	UR YAMAHA BLACK
8	90119-06118	BOLT, WITH WASHER	4	
9	90183-05042	NUT, SPRING	2	
10	97706-50016	SCREW, TAPPING	2	

FIG. 24 - LEG SHIELD



REF. NO.	PART NO.	DESCRIPTION	Q'TY	REMARKS
1	4MJ-F8311-12	LEG SHIELD 1	1	UR YAMAHA BLACK
2	4MJ-F8371-00	DAMPER	1	
3	35R-21796-00	HINGE	2	
4	97706-40512	SCREW, TAPPING	2	
5	4MJ-F8313-00	LID	1	UR YAMAHA BLACK
6	4MJ-F1780-01	SIDE COVER LOCK ASSY	1	
7	90159-06835	SCREW, WITH WASHER	1	
8	4MJ-F834V-00	PROTECTOR 1	1	
9	97706-50016	SCREW, TAPPING	4	
10	97706-50016	SCREW, TAPPING	2	
11	3WG-F8349-10	CAP	1	UR YAMAHA BLACK
12	4MJ-F8385-20	COVER, LOWER	1	UR LOW GLOSS GRAY
13	3VP-21535-00	NUT 1	2	
14	4SN-F118N-00	LABEL, PARTS MARKING	1	

FIG. 25 - COWLING 1



REF. NO.	PART NO.	DESCRIPTION	Q'TY	REMARKS
1	4MJ-F6213-00-4B	COVER, UPPER	1	UR BLACK 2
	4MJ-F6213-00-0M	COVER, UPPER	1	UR SWEET HEART RED
2	4MJ-F639G-00	SEAL	1	
3	4MJ-F6215-10	COVER, LOWER	1	UR YAMAHA BLACK
4	97701-50016	SCREW, TAPPING	4	
5	90159-05028	SCREW, WITH WASHER	1	
6	4SN-F415E-00	LABEL, CAUTION	1	
7	4MJ-F6280-10	REAR VIEW MIRROR ASS'Y (LEFT)	1	
8	4MJ-F6290-10	REAR VIEW MIRROR ASS'Y (RIGHT)	1	
9	90464-13804	CLAMP	1	

CONTENTS

ENGINE

CYLINDER HEAD.....	B2
CRANKSHAFT, PISTON.....	B3
AIR SHROUD, FAN.....	B4
OIL PUMP.....	B5
INTAKE.....	B6
CARBURETOR.....	B7
EXHAUST.....	B8
CRANKCASE.....	B9-B10
STARTER.....	B11
CLUTCH.....	B12-B13
TRANSMISSION.....	B14

CHASSIS

FRAME.....	B15
FENDER.....	C2
SIDE COVER.....	C3
OIL TANK.....	C4
REAR SUSPENSION.....	C5
FRONT FORK.....	C6
FUEL TANK.....	C7
SEAT, CARRIER.....	C8
FRONT WHEEL.....	C9-C10
REAR WHEEL.....	C11
STEERING HANDLE, CABLE.....	C12
STANT, FOOTREST.....	C13
LEG SHIELD.....	C14
COWLING.....	C15

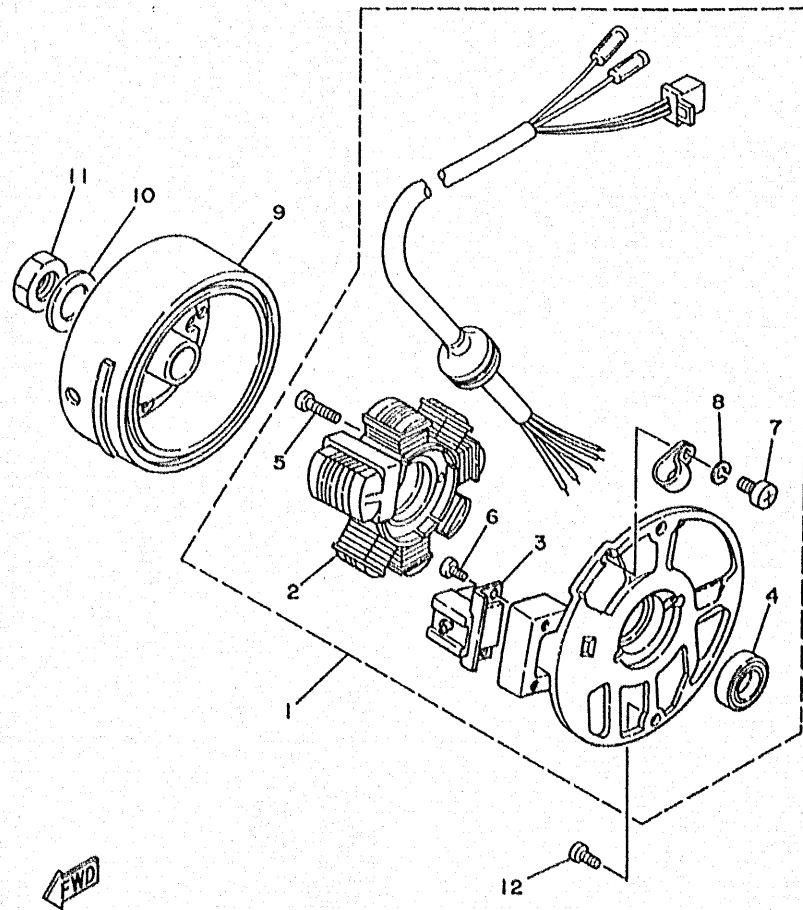
ELECTRICAL

GENERATOR.....	D2
METER.....	D3
HEADLIGHT.....	D4
TAILLIGHT.....	D5
HANDLE SWITCH, LEVER.....	D6
ELECTRICAL 1.....	D7
ELECTRICAL 2.....	D8

INDEX

NUMERICAL INDEX.....	M1 ~ M2
----------------------	---------

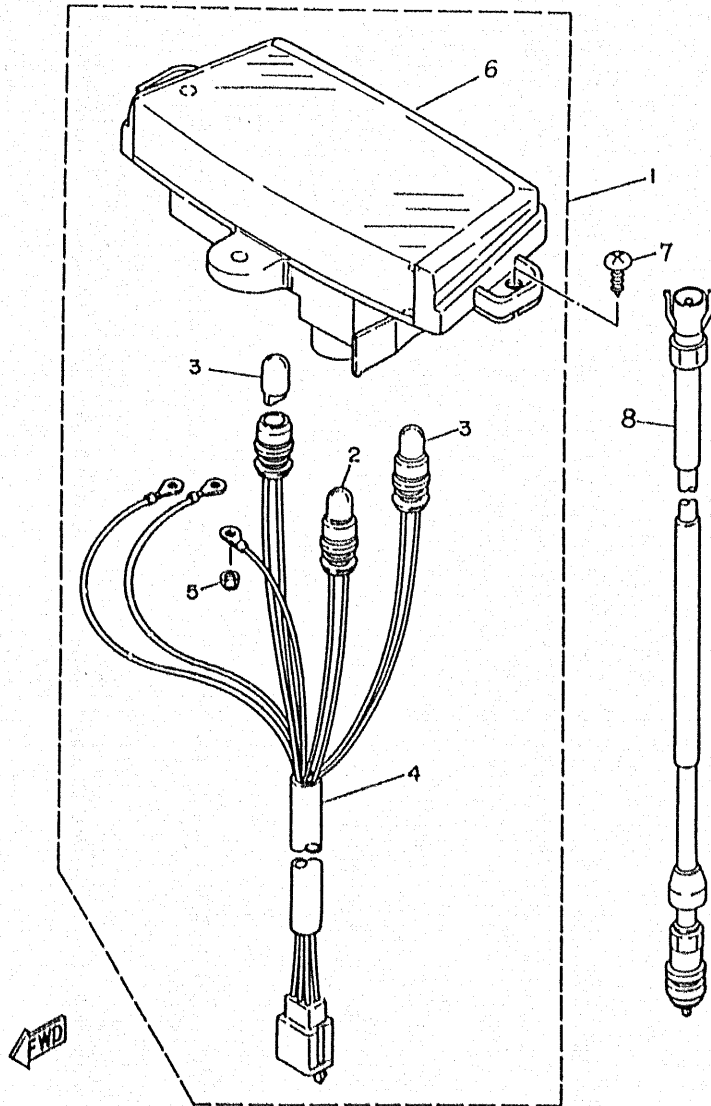
FIG. 26 - GENERATOR



REF. NO.	PART NO.	DESCRIPTION	QTY	REMARKS
1	4CU-85560-00	BASE ASSY	1	
2	3VP-81403-00	• STATOR COMP.	1	
3	2JA-85580-M0	• COIL, PULSER	1	
4	93104-19097	• OIL SEAL	1	
5	98511-05020	• SCREW, PAN HEAD	2	
6	98580-05010	• SCREW, PAN HEAD	2	
7	98501-04006	• SCREW, PAN HEAD	1	
8	92901-04100	• WASHER, SPRING	1	
9	2JA-85550-00	ROTOR ASSY	1	
10	92907-10600	WASHER, PLATE	1	
11	90170-10219	NUT	1	
12	98507-06016	SCREW, PAN HEAD	2	

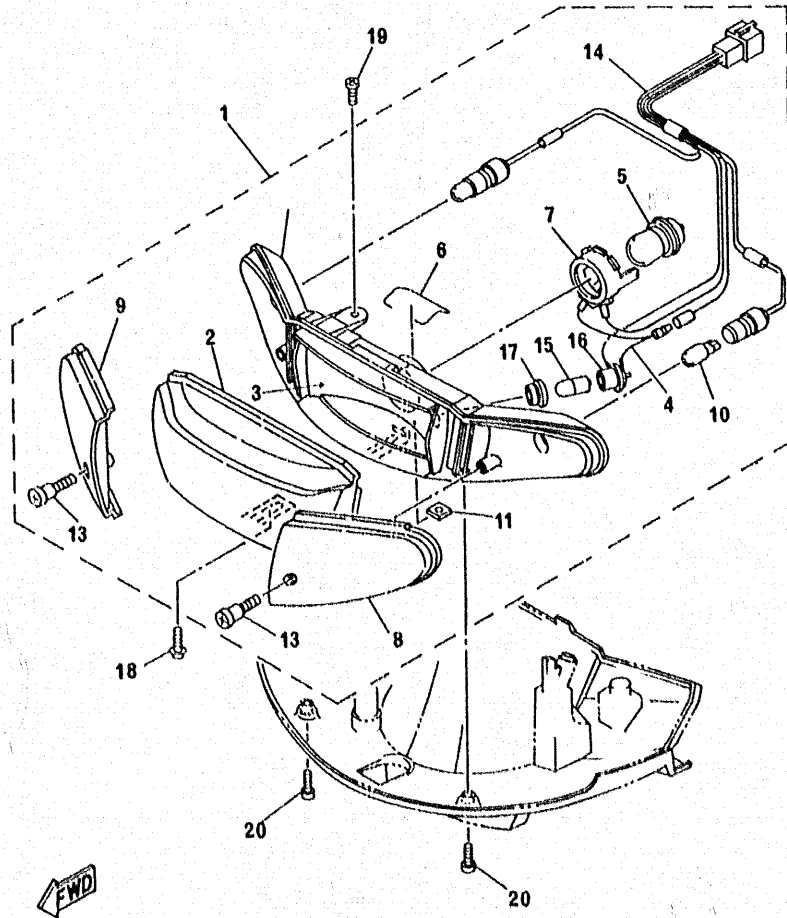
← FWD

FIG. 27 - METER



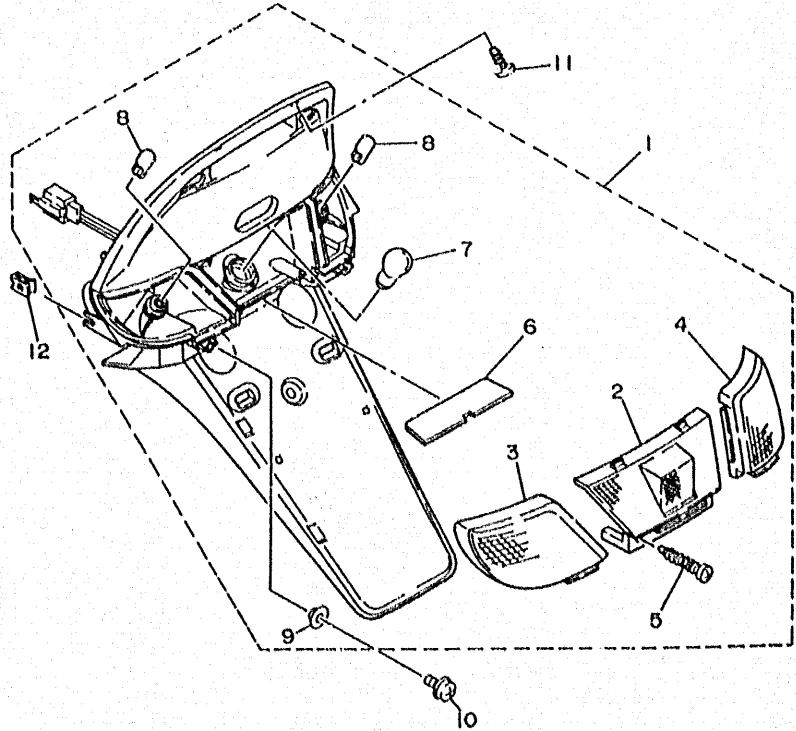
REF. NO.	PART NO.	DESCRIPTION	Q'TY	REMARKS
1	4MJ-H3510-A0	SPEEDOMETER ASSY	1	
2	4MJ-H3516-00	• BULB	1	
3	4MJ-H3517-00	• BULB	2	
4	4MJ-H3520-00	• SOCKET CORD ASSY	1	
5	4MJ-H366W-00	• NUT, SPECIAL 1	3	
6	4MJ-H353K-00	• GLASS PLATE	1	
7	97701-50016	SCREW, TAPPING	2	
8	4MJ-H3550-02	SPEEDOMETER CABLE ASSY	1	

FIG. 28 - HEADLIGHT



REF. NO.	PART NO.	DESCRIPTION	QTY	REMARKS
1	4PC-H4300-00	HEADLIGHT ASSY	1	
2	4PC-H4321-00	• LENS HEADLIGHT	1	
3	4PC-H4323-00	• REFLECTOR	1	
4	4PC-H4312-00	• SOCKET	1	
5	4PC-H4314-00	• BULB, HEADLIGHT	1	
6	3WG-H4324-00	• SPRING, REFLECTOR	1	
7	4PC-H3412-00	• SOCKET, HEADLIGHT	1	
8	4PC-H3312-00	• LENS, FLASHER	1	UR BLACK
	4MJ-H3312-00	• LENS, FLASHER	1	UR AMBER
9	4PC-H3322-00	• LENS, FLASHER 2	1	UR BLACK
	4MJ-H3322-00	• LENS, FLASHER 2	1	UR AMBER
10	3VP-83311-00	• BULB, FLASHER	2	
11	4MJ-H4317-00	• NUT	1	
12	4MJ-H4311-00	• BODY, HEADLIGHT	1	
13	4MJ-H4337-00	• BOLT, SPECIAL	2	
14	4MJ-H4359-00	• CORD, HEADLIGHT	1	
15	4CX-H4347-00	• BULB	1	
16	4CX-H4346-00	• SOCKET, PILOT LIGHT	1	
17	4CX-H4352-00	• GROMMET	1	
18	90159-05155	• SCREW, WITH WASHER	1	
19	97701-50016	SCREW, TAPPING	1	
20	97702-50022	SCREW, TAPPING	2	

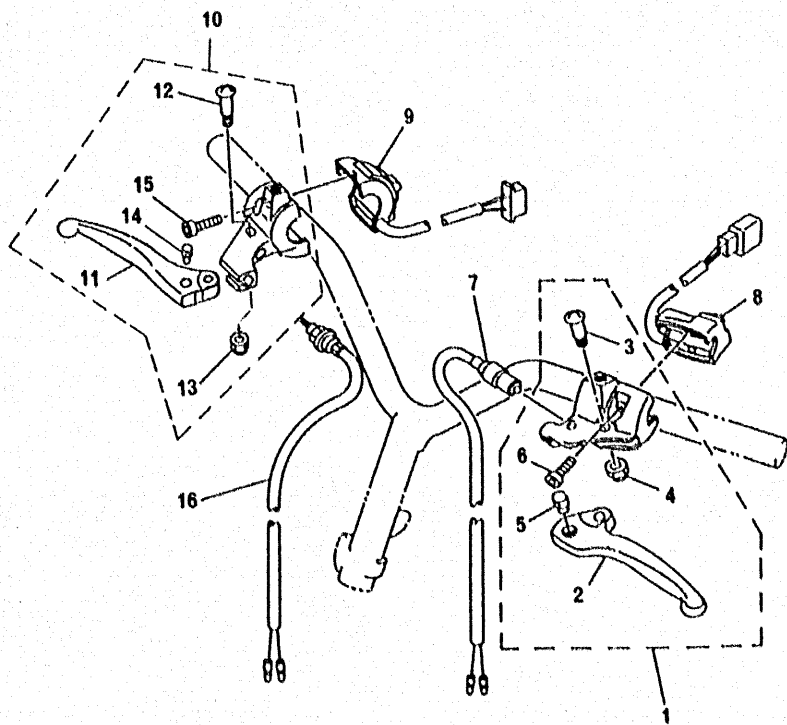
FIG. 29 - TAILLIGHT



REF. NO.	PART NO.	DESCRIPTION	Q'TY	REMARKS
1	4PC-H4700-10	TAIL LIGHT ASSY	1	
2	4MJ-H4721-00	• LENS, TAILLIGHT	1	
3	4PC-H3332-00	• LENS, FLASHER	1	UR BLACK
	4MJ-H3332-00	• LENS, FLASHER	1	UR AMBER
4	4PC-H3342-00	• LENS, FLASHER 2	1	UR BLACK
	4MJ-H3342-00	• LENS, FLASHER 2	1	UR AMBER
5	97701-40620	• SCREW, TAPPING	2	
6	4MJ-H4743-00	• LENS, LICENSE LIGHT	1	
7	4BA-H4714-00	• BULB	1	
8	3TH-H3311-00	• BULB, FLASHER	2	
9	4MJ-H4725-00	• WASHER, SPECIAL	2	
10	90119-06043	BOLT, WITH WASHER	2	
11	97706-50016	SCREW, TAPPING	2	
12	90183-05042	NUT, SPRING	2	

FWD

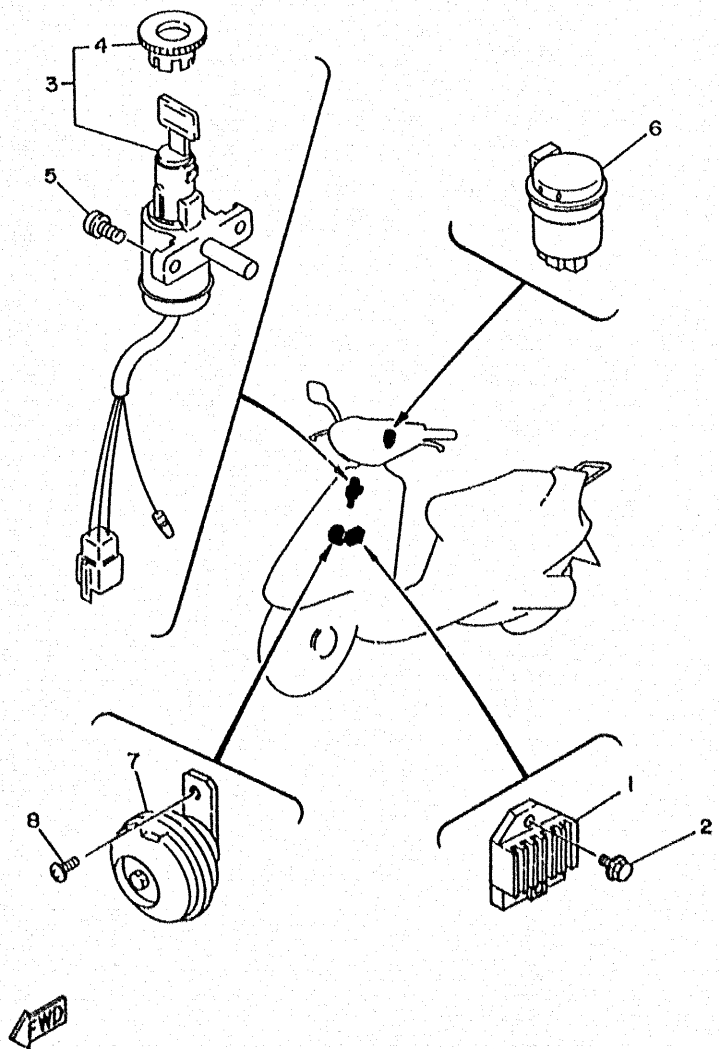
FIG. 30 - HANDLE SWITCH. LEVER



REF. NO.	PART NO.	DESCRIPTION	Q'TY	REMARKS
1	4CU-H2910-00	LEVER HOLDER ASSY (LEFT)	1	
2	3VL-H3912-00	• LEVER 1	1	
3	3VL-H3915-00	• SCREW, LEVER FITTING	1	
4	3VL-H3916-00	• NUT, LEVER FITTING	1	
5	3VL-F636A-00	• END WIRE 1	1	
6	3VL-H3945-00	• BOLT, LEVER	2	
7	3VL-H3980-00	FRONT STOP SWITCH ASSY	1	
8	3VL-H3976-10	SWITCH, HANDLE 1	1	
9	4KH-H3975-10	SWITCH, HANDLE 2	1	
10	3VL-H2920-00	LEVER HOLDER ASSY (RIGHT)	1	
11	3VL-H3922-00	• LEVER 2	1	
12	3VL-H3915-00	• SCREW, LEVER FITTING	1	
13	3VL-H3916-00	• NUT, LEVER FITTING	1	
14	3VL-F636A-00	• END, WIRE	1	
15	3VL-H3945-00	• BOLT, LEVER	2	
16	3VL-H3980-00	FRONT STOP SWITCH ASSY	1	

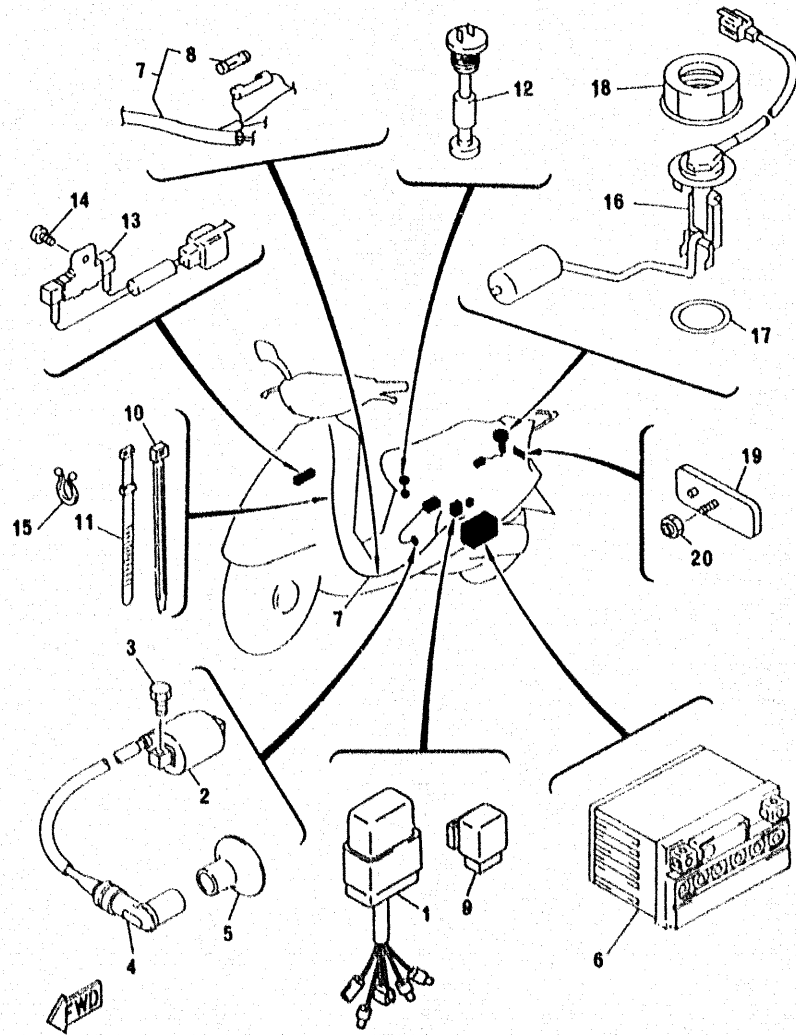
← FWD

FIG. 31 - ELECTRICAL 1



REF. NO.	PART NO.	DESCRIPTION	Q'TY	REMARKS
1	4VV-H1960-00	RECTIFIER & REGULATOR ASSY	1	
2	95021-06016	BOLT, FLANGE	1	
3	4MJ-H2501-01	MAIN SWITCH STEERING LOCK	1	
4	4MJ-H2552-00	• CAP, SWITCH	1	
5	91316-06010	BOLT	2	
6	4MJ-H3350-00	FLASHER RELAY ASSY	1	
7	4MJ-H3371-00	HORN	1	
8	98501-06010	SCREW, PAN HEAD	1	

FIG. 32 - ELECTRICAL 2



REF. NO.	PART NO.	DESCRIPTION	Q'TY	REMARKS
1	4CU-85540-00	C.D.I. UNIT ASSY	1	
2	3KJ-82310-01	IGNITION COIL ASSY	1	
3	97301-06016	BOLT	2	
4	3WG-H2370-10	PLUG CAP ASSY	1	
5	3WG-H2372-00	SEAL, PLUG CAP	1	
6	3UC-82100-00	BATTERY ASSY	1	
7	4PC-H2590-30	WIRE HARNESS ASSY	1	
8	3WG-H2151-00	FUSE	1	
9	27V-81940-02	STARTER SWITCH ASSY	1	
10	5T8-H3936-10	BAND, SWITCH CORD	3	
11	5T8-H3936-00	BAND, SWITCH CORD	1	
12	3VL-H5720-10	OIL LEVEL GAUGE ASSY	1	
13	3WG-H5730-10	RESISTOR ASSY	1	
14	98501-06010	SCREW, PAN HEAD	1	
15	90465-18147	CLAMP	1	
16	4MJ-H5752-10	SENDER UNIT ASSY, FUEL METER	1	
17	4MJ-H5753-00	GASKET, SENDER UNIT	1	
18	4MJ-F4261-00	HOUSING, FUEL METER	1	
19	4BA-H5130-00	REAR REFLECTOR ASSY	1	
20	95706-05500	NUT, FLANGE	1	

PART NO.	REF. NO.	PART NO.	REF. NO.	PART NO.	REF. NO.	PART NO.	REF. NO.	PART NO.	REF. NO.	PART NO.	REF. NO.
	C9-C9	35R-21796-00	C14	3WG-E4451-00	B6	4MJ-F171N-20	C3	3WG-F5338-00-35	C11	4PC-H3412-00	D4
	C11-C11	164-22216-00	B9	3WG-E4452-00	B6	4MJ-F1721-00-0M	C3	5T8-F533A-00	C9	4MJ-H3510-A0	D3
1YU-11681-00	B3	2E9-23412-00	C6	3WG-E4453-00	B6	4MJ-F1721-00-4B	C3	3WG-F5355-00	C11	4MJ-H3516-00	D3
4FW-12658-00	B4	2E9-23413-01	C6	4SN-E4610-20	B8	4MJ-F1751-00	C4	3WG-F5357-00	C11	4MJ-H3517-00	D3
3KJ-13100-01	B5	2E9-24182-00	C7	3WG-E4613-00	B8	3WG-F1771-00	C4	4PC-F6110-00	C12	4MJ-H3520-00	D3
3AA-13124-00	B5			4FG-E4638-00	B8	4MJ-F1780-01	C14	4MJ-F6213-00-0M	C15	4MJ-H353K-00	D3
2GM-13178-00	B5	3KJ-24500-01	C7	4LN-E4618-00	B8	4SJ-F1782-30	C3	4MJ-F6213-00-4B	C15	4MJ-H3550-02	D3
3WF-13185-00	B5	4X8-24565-00	C7	3VL-E4729-00	B8	4SJ-F1782-40	C3	4MJ-F6215-10	C15	4MJ-H366W-00	D3
1YU-13187-00	B5	3VP-24717-00	C8	3VL-E4777-00	B8	4SN-F1789-00	C3	3VL-F6241-00	C12	3VL-H3912-00	D6
1YU-13473-00	B5	3KJ-25326-00	C11	3VL-E5128-00	B9	4MJ-F2210-A0-33	C5	3VL-F6242-00	C12	3VL-H3915-00	D6-D6
1YU-13516-00	B5	3KJ-25351-00	C11	4KH-E5150-00	B9	4MJ-F3100-00	C6	3WG-F6243-00	C12	3VL-H3916-00	D6-D6
1YU-13577-00	B5	3Y6-25351-00	C9	4CU-E5317-00	B9	4MJ-F3110-00	C6	4MJ-F6280-10	C15	3VL-H3922-00	D6
3YJ-14103-00	B7	3KJ-26329-00	B7	3VL-E5363-00	B9	3JX-F311E-00	B6	4MJ-F6290-10	C15	5T8-H3936-00	D8
4JP-14104-00	B7	NE5-31891-00	B8	4CU-E5371-00	B9	4MJ-F3120-00	C6	4PC-F6311-00	C12	5T8-H3936-10	D8
3WF-1410A-10	B7	NJ6-54041-00	B8	4CU-E5411-00	B9	4MJ-F3122-00	C6	3WG-F6312-C0	C12	3VL-H3945-00	D6-D6
1HV-14147-00	B7	3VP-81403-00	D2	4CU-E5421-00	B9	4MJ-F3132-00	C6	3WG-F6329-00	C12	4KH-H3975-10	D6
288-14161-00	B7	3KJ-81800-01	B11	4CU-E5451-00	B9	4MJ-F3141-00	C6	4SN-F6341-00	C12	3VL-H3976-10	D6
4SN-14301-00	B7	1YU-81801-M0	B11	4CU-E5461-00	B9	3WG-F3143-00	C6	4PC-F6351-00	C12	3VL-H3980-00	D6-D6
3KJ-14312-30	B7	27V-81940-02	D8	4CU-E5462-00	B10	4CX-F3195-00	C6	3VL-F636A-00	D6-D6	4PC-H4300-00	D4
14T-14323-00	B7	3UC-82100-00	D8	4CU-E5532-00	B10	4MJ-F334G-01	C6	3WG-F6393-00	C12	4MJ-H4311-00	D4
1YU-14331-00	B7	3KJ-82310-01	D8	4CU-E5630-00	B11	4MJ-F334H-01	C6	4MJ-F639G-00	C15	4PC-H4312-00	D4
14T-14341-01	B7	3VP-83311-00	D4	3VL-E5657-00	B12	3WG-F3411-00	C6	4CX-F7111-00	C13	4PC-H4314-00	D4
14T-14343-36	B7	4CU-85540-00	D8	3VL-E5659-00	B11	4MJ-F3414-00	C6	2JW-F7114-00	C7	4MJ-H4317-00	D4
3KJ-14349-01	B7	2JA-85550-00	D2	4CU-E5659-00	B9	1TK-F3454-00	C6	4MJ-F7481-10	C13	4PC-H4321-00	D4
3KJ-14353-18	B7	4CU-85560-00	D2	4CU-E5673-00	B11	4SN-F4111-01	C7	4MJ-F8311-12	C14	4PC-H4323-00	D4
14T-14384-00	B7	2JA-85580-M0	D2	4CU-E6111-00	B12	4MJ-F414A-01	C7	4MJ-F8313-10	C14	3WG-H4324-00	D4
1HV-14385-01	B7	NH7-91810-00	B8	4CU-E7410-00	B14	4SN-F415A-00	C3	3WG-F8349-10	C14	4MJ-H4337-00	D4
367-14386-00	B7	4CU-E1111-00	B2	4CU-E7420-00	B14	4SN-F415E-00	C15	4MJ-F834V-00	C14	4CX-H4346-00	D4
2JA-14392-00	B7	4FW-E1181-00	B2	3VL-E7611-00	B12	4MJ-F416A-00	C7	4MJ-F8371-00	C14	4CX-H4347-00	D4
2JA-14397-00	B7	4FW-E1311-00	B2	4CU-E7620-00	B12	4MJ-F4183-00	C7	4MJ-F8385-20	C14	4CX-H4352-00	D4
4JP-14561-00	B7	4CU-E1351-00	B2	3VL-E7623-00	B12	4MJ-F4311-00	C7	4VW-H1960-00	D7	4MJ-H4359-00	D4
3AA-14653-00	B8	4CU-E1400-00	B3	4CU-E7632-00	B12	4MJ-F4312-00	C7	3WG-H2129-00	C8	4PC-H4700-10	D5
3AA-1469A-01	B8	4CU-E1412-00	B3	3VL-E7653-00	B12	4MJ-F4610-00	C7	3WG-H2151-00	D8	4BA-H4714-00	D5
2JA-14737-00	B8	3VL-E1415-00	B3	4HU-E7654-00	B13	4MJ-F4711-00	C8	3WG-H2370-10	D8	4MJ-H4721-00	D5
4FG-14747-00	B8	4CU-E1422-00	B3	4MJ-F1110-00	B15	4MJ-F4726-00	C8	3WG-H2372-00	D8	4MJ-H4725-00	D5
3WX-14766-00	B8	3VL-E1610-00	B3	4PC-F117M-00	B15	4MJ-F4730-A0	C8	4MJ-H2501-01	D7	4MJ-H4743-00	D5
4FK-1490J-01	B7	3VL-E1610-10	B3	4SN-F118N-00	C14	4MJ-F473R-01	C8	3WG-H2541-00	B11	4BA-H5130-00	D8
3AA-15513-00	B11	3VL-E1631-00-96	B3	4MJ-F1232-00	B15	4MJ-F4747-00	C8	4MJ-H2552-00	D7	3WG-H5370-00	D8
3KJ-15528-00	B11	3VL-E1633-00	B3	3WG-F1381-00	C5	4MJ-F475M-00	C8	4MJ-H2590-30	D8	4MJ-H5752-10	D8
3VL-15570-00	B11	3VL-E1636-00	B3	3WG-F139X-00	B15	4MJ-F4780-01	C8	4CU-H2910-00	D6	4MJ-H5753-00	D8
3KJ-15601-00	B11	3VL-E1651-10	B3	3WG-F1410-00	B15	3WG-F5116-00	C9	3VL-H2920-00	D6	2JL-W2536-10	C9-C11
3AA-15650-00	B11	4MJ-E2611-00	B4	3WG-F1481-10	B15	3WG-F5121-00-35	C9	3TH-H3311-00	D5	4CU-X5620-00	B11
3YJ-16611-00	B12	4CU-E2651-00	B4	4MJ-F1511-00-0M	C2	3WG-F5135-10	C9	4MJ-H3312-00	D4	90101-06278	C9-C11
4CX-16620-00	B12	4FW-E2653-00	B4	4MJ-F1511-00-4B	C2	3WG-F5137-00	C9	4PC-H3312-00	D4	90102-10872	C5
3VR-16626-00	B12	4CU-E3555-00	B6	4PC-F1552-00	C2	3WG-F5137-10	C9	4MJ-H3322-00	D4	90105-08121	C5
3VP-17641-00	B12	4CU-E3610-00	B6	3WG-F1553-00	C2	3WG-F5138-10	C9	4PC-H3322-00	D4	90105-10036	C12
3AA-17660-01	B12	4CU-E3613-00	B6	4SJ-F1569-30	C2	3WG-F513A-00	C11	4MJ-H3332-00	D5	90109-063F1	C8
24G-17664-00	B13	4CU-E3616-00	B6	4SJ-F1569-40	C2	3WG-F5155-00	C9	4PC-H3332-00	D5	90109-063F5	C7
3AA-17670-00	B12	4CU-E3621-00	B6	4MJ-F1711-00-0M	C3	3WG-F5159-00	C9	4MJ-H3342-00	D5	90116-07353	B2
3KJ-17684-00	B13	3WG-E4411-00	B6	4MJ-F1711-00-4B	C3	3WG-F5168-00-35	C9	4PC-H3342-00	D5	90119-06042	C4
3KJ-21481-00	B15	3WG-E4412-00	B6	4PC-F171L-20	C3	3WG-F5181-00	C9	4MJ-H3350-00	D7	90119-06043	D5
3VP-21535-00	C14	3WG-E4437-00	B6	4PC-F171M-20	C3	3WG-F533C-00	C9-C11	4MJ-H3371-00	D7		

PART NO.	REF. NO.	PART NO.	REF. NO.	PART NO.	REF. NO.	PART NO.	REF. NO.	PART NO.	REF. NO.
90119-06044	C2	90467-11010	C7	94701-00110	B2	99530-10014	B9-B9		
90119-06118	C13	90467-24140	B6	95021-06016	D7	99530-12016	B9		
90149-06184	C3	90468-02033	B5-B5	95301-06600	C9				
90159-05028	C15	90468-12006	C13	95607-12200	B15				
90159-05155	D4	90480-10468	B4	95701-08500	C11				
90159-06835	C14	90480-12497	B4-B6	95706-05500	D8				
90167-05041	C8	90501-29517	B15	95801-08016	B9				
90167-05055	C3	90501-357F3	B13	95806-06012	B15-C2				
90170-10219	B12-D2	90506-15260	C9-C11	95817-08040	B8				
90170-10317	B12	90506-32464	C13	95821-08012	C5				
90179-06176	C12-C12	90508-26393	C9	95826-08025	B8				
90179-06403	C8	90508-32609	B11	97301-06016	D8				
90179-07381	B2	90560-06366	C7	97316-06025	B11				
90179-28415	B13	90560-10289	C9	97601-05110	C6				
90183-05042	C3-C3	90560-10360	C9	97606-05210	C6				
	C13-D5	91311-06020	B8	97701-40620	D5				
90185-10822	B15-C5	91316-06010	D7	97701-50016	C15-D3				
	C9-C12	91316-06020	B6-B11		D4				
90185-14150	C11	92901-04100		97701-50525	B6				
90201-062A8	B8	92907-03600	B6	97702-50022	D4				
90201-06412	B12	92907-06100	B4-B7	97706-40512	C14				
90201-06815	B6	92907-06600	B4-B4	97706-50016	C2-C3				
90201-068A6	C9	92907-10600	D2		C3-C3				
90201-08088	B11	92990-04100	B7		C3-C13				
90201-08107	C8	93101-20138	B3		C14-C14				
90201-123K4	B14	93102-17342	B12		D5				
90201-136P4	B12	93102-20425	B3	97707-60540	B4				
90201-14819	C11	93102-22082	B14	98501-04006	D2				
90201-155G5	B11	93102-40367	C9	98501-05014	B5				
90201-17898	C11	93104-19097	D2	98501-06010	B12-D7				
90202-10120	C13	93106-17015	C9		D8				
90208-10112	B12	93109-33049	B12	98501-06012	B9-B11				
90208-12049	B14	93210-06550	B12	98501-06035	B9				
90214-13055	B12	93210-07435	C11	98506-05010	C12				
90240-10132	C13	93210-10010	C9	98506-06020	B6				
90241-10015	C8	93210-14104	B9	98507-03008	B6				
90249-12008	C12-C12	93210-23614	B11	98507-06016	B4-D2				
90280-03017	B3	93210-38687	B13	98507-06020	B4-B9				
90380-15083	B11	93210-64488	B4	98507-06025	B9				
90387-067V1	B4-B6	93300-63813	B12	98507-06035	B9-B9				
90387-078K5	C13	93306-00308	B12	98507-06065	B9				
90387-135U9	B12	93306-00319	B9	98511-05020	D2				
90387-156U0	B3	93306-20005	C9	9858J-04016	B7				
90430-08119	B9	93306-20006	B14	98580-05010	D2				
90445-05431	B5	93306-20346	B14	98580-05014	B7				
90445-07434	C7	93306-20458	B3	98580-06016	B7				
90445-09304	B5	93310-210M0	B3	98581-03006	B7				
90446-11347	B9	93310-257R1	B11	98907-06014	B8				
90464-13804	C12-C15	93420-40064	B14	99009-15400	B11				
90465-1814	D8	93450-11120	B3	99009-17400	B9-B12				
90467-08003	B5	93505-32002	C6	99009-19400	B5				
90467-09006	C7	93603-12007	B5	99236-00080	C2				